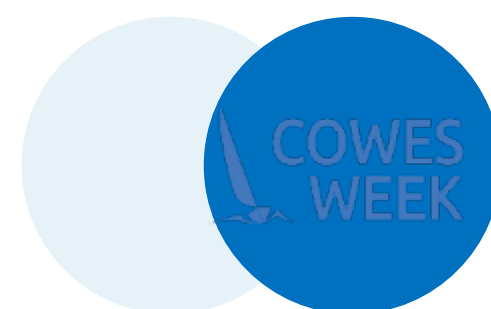




Welcome to the Cowes Week Skippers' Briefing



Fundamental Rule 3

“ The responsibility for a boat’s decision to participate in a race or to continue racing is hers alone ”



Safety

- We have an experienced dedicated safety team supporting the event.
- They monitor Ch77.
- The team is in contact with the Coastguard and other emergency services and will support their response.
- Able to coordinate non-emergency matters.
- Please remember that you are responsible for your own safety, although the team will support as appropriate.
- Do read the Competitors Safety Booklet as it contains important information.
- The Solent is of course a busy place, and racing is mixing with both leisure and commercial activity.



 COWES
WEEK 2025

SAFETY BOOKLET

2 - 8 AUGUST

Amendments

- Any amendments will be posted on the ONB before 0830 on the day it will take effect.

Race Schedule

- Race schedule is published as a separate document to the Sailing Instructions. The schedule can be changed up to one hour before the race start although we will aim to announce any changes by 2030 the previous evening

Not sailing

- If you are not sailing, please tell us by using the Did Not Compete button on the app



RYS Start lines

- RYS Start Line 1: transit between RYS flagpole and the white line on the orange diamond on the RYS roof.
- ODM (Alpha - 8A) will not be on the start line.
- Direction of the start: indicated by a flag in the RYS haven – Green for West, Red for East

CV lines

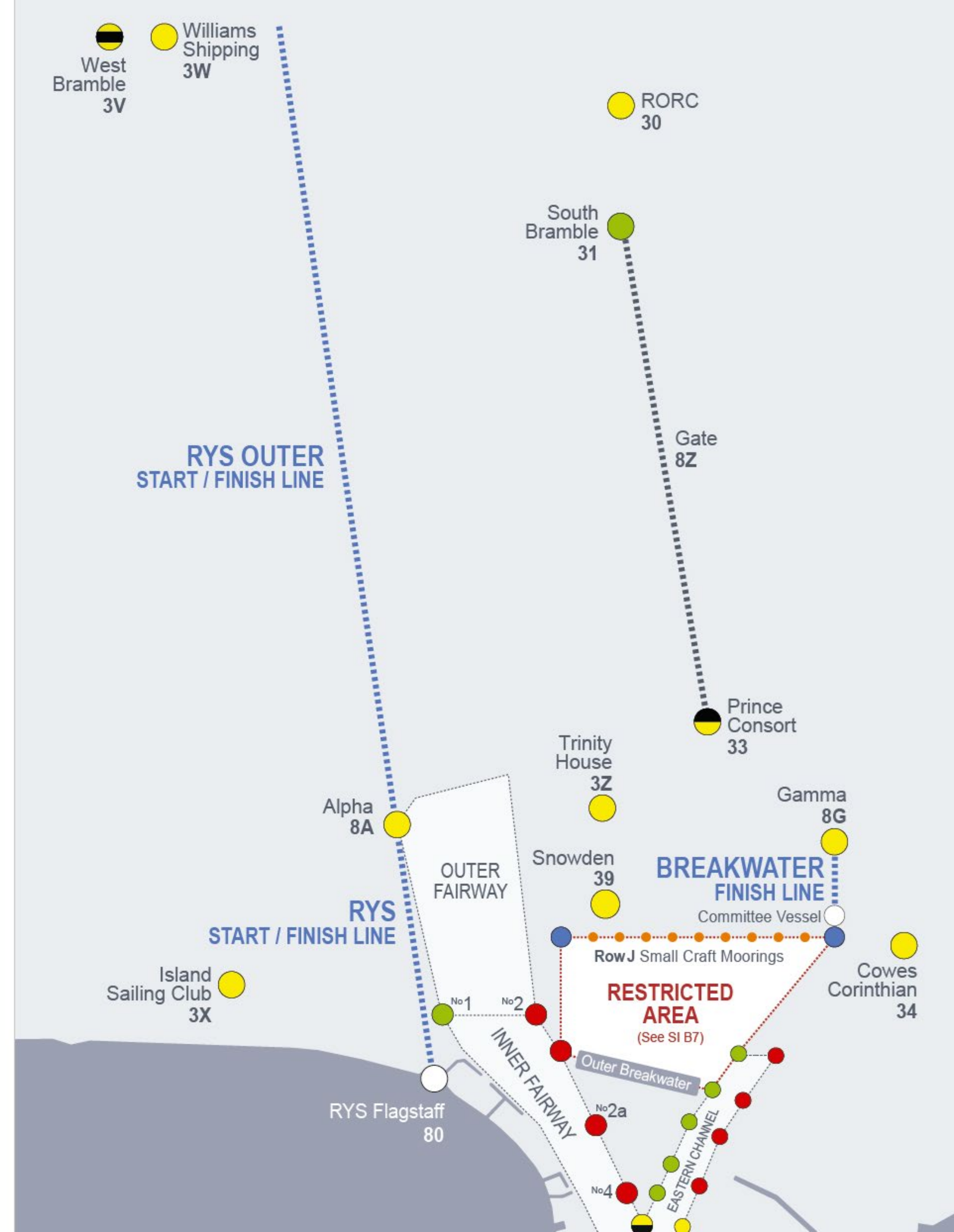
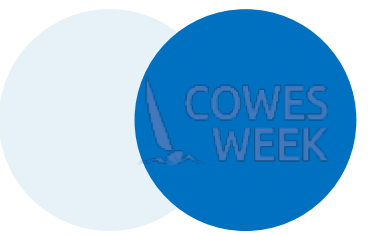
- Imaginary line between orange flagstaff and ODM.

Keeping Clear

- **Five-minute rolling sequence: boats are required to keep clear of boats already in sequence (SI 12.4)**



RYS Start lines



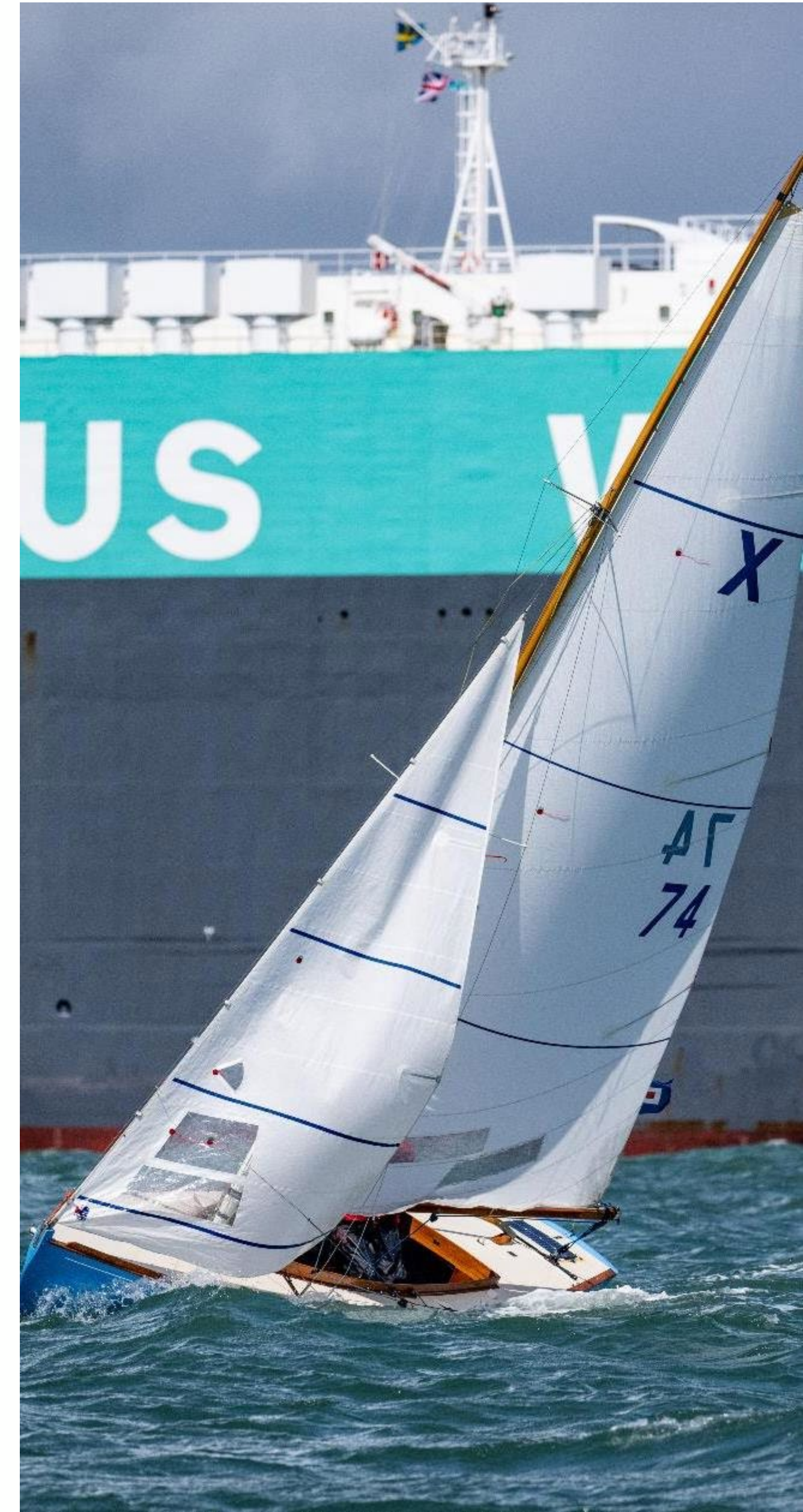
VHF

- **General information and start lines for classes.**
Course announcements for boats starting on an RYS line
Channel 22
- **RYS Starts**
Channel 03
- **CV Starts**
CV 1 – Channel 02
CV 2 – Channel 04
CV 3 – Channel 72
CV 4 – Channel 05
- **Comms with race committee/retirements**
Channel 77
- **Emergency/Coastguard**
Channel 16

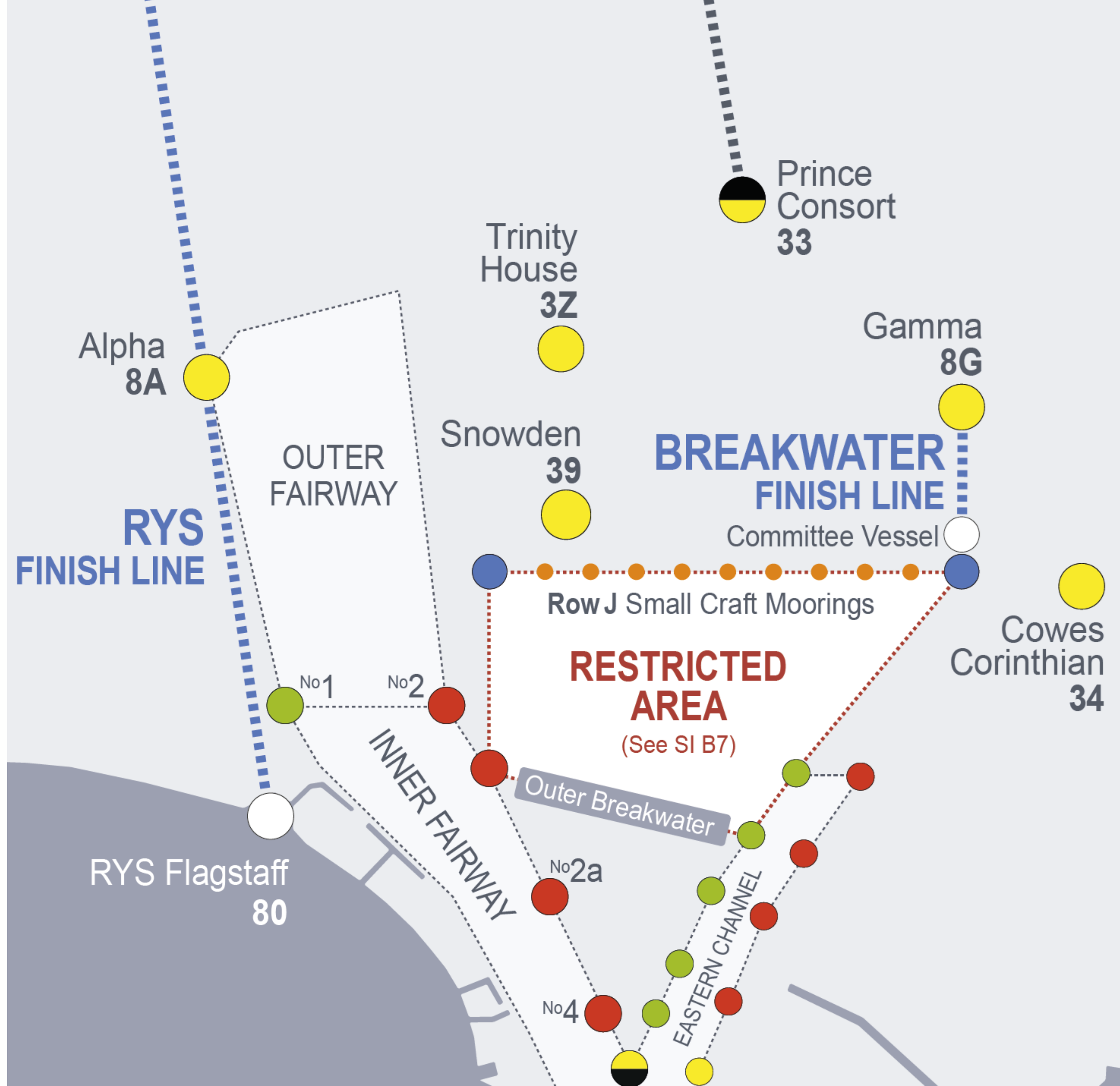


Restrictions

- Small craft moorings – keep North of the moorings (row J) when racing, mooring rank J is an obstruction.
- The eastern end of row J is marked by a blue buoy.
- Gamma 8G is a little further east than last year to help prevent the temptation for those finishing on the Breakwater Line to duck inside the moorings.
- Cowes Breakwater – keep North of Cowes breakwater.
- ABP Notice to Mariners number 6 of 2025 – moving prohibited zone.
- CHC general directions and NtM



Restrictions



Courses

- Courses as per table 4 of the SIs
- Courses displayed on the App and also announced on VHF
- Boats on CV starts may use the defined windward/leeward courses at Diagram 1
- (SI.5) Signals displayed over a white flag are for the whole of White Group and those over a black flag for Black Group.

Finish lines

- Indicated by the last mark ID of the course
- RYS finish line (81) between the RYS flagpole and Alpha (8A)
- RYS Outer line between Alpha (8A) and Williams Shipping (3W)
- Breakwater Finish Line (88) between Gamma (8G) and a blue flag on a CV positioned nearby

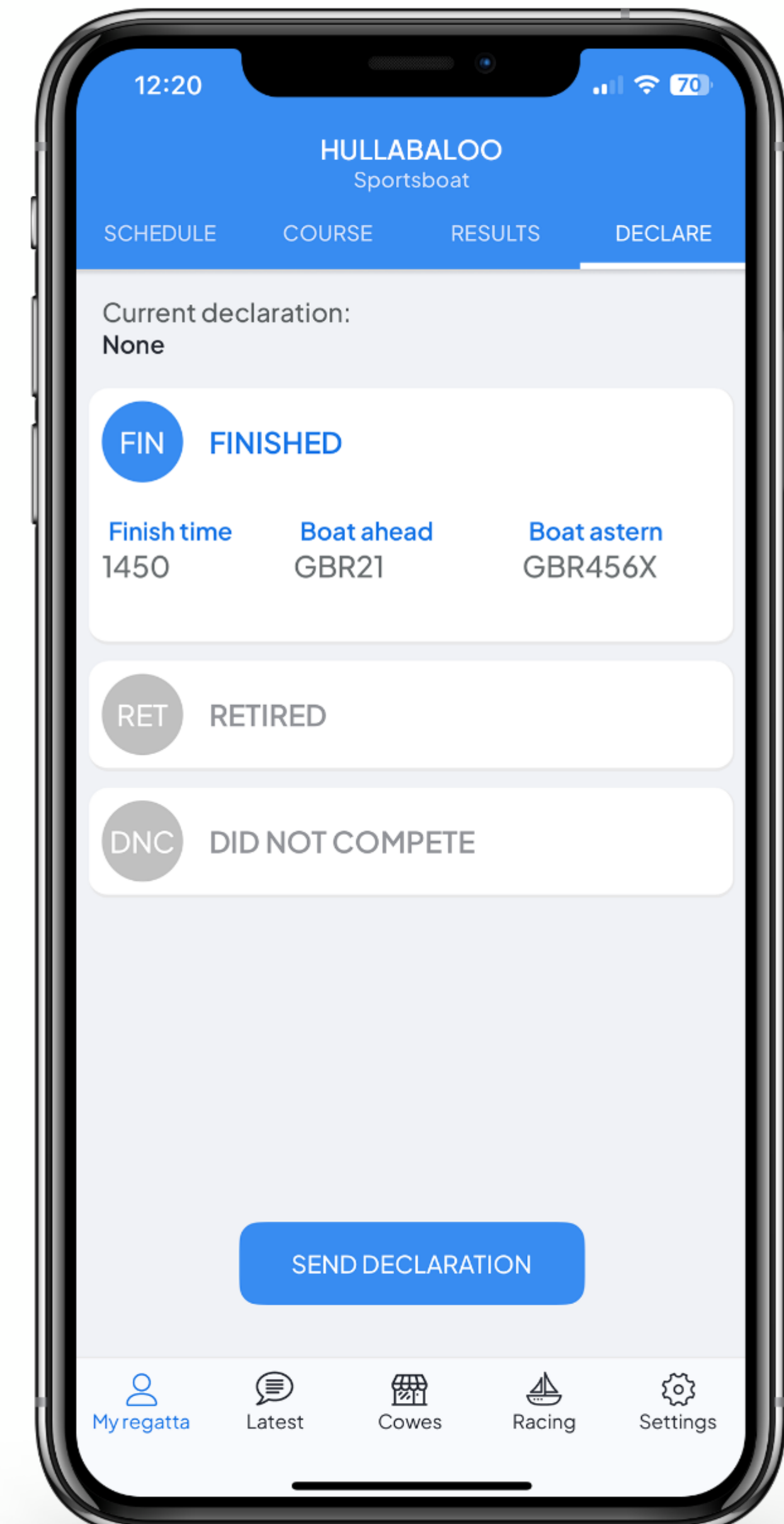


Declarations

- Easiest on the App
- Must be made within 60 minutes of the boat finishing her final race of the day.
- Select 'My Regatta' from the bottom menu and then 'Declare' from the top tab.
- Or by calling +44 1983 295744
- Retirements by App (best) or VHF 77
- NoR 17 and SI 19.3 – Boat identification.

Protests

- Lodged in writing at the regatta office
- Sat – Thurs within two hours of finishing
- Fri – within one hour of finishing



Time penalties

- Appendix E - RRS 44.2 turns replaced by a 1% time penalty except J/70 and SB20 Sat – Tue; Cape 31s (Sun – Tue) and Swallows (Mon-Fri)
- Z Flag penalty – 3% time penalty
- Acceptance of time penalty by displaying a yellow flag until finished



Summary

Please:

- Have fun!
- Be safe!
- Keep clear of the RYS start line until it is your 5 minute sequence.
- Be polite / considerate of the many volunteers that are doing their very best to delivery a wonderful regatta for you.
- Make sure Class Flags, sail numbers / dodgers can be seen – we need to be able to identify you finishing.
- Keep an eye on the App as we will use this to publish supporting information.
- Within the constraints of Solent racing, we will do our best to give you great courses and keep you informed of the plans for each day.





Captain Barry Sadler

1st Class Pilot Unrestricted
Container Ship Specialist Pilot

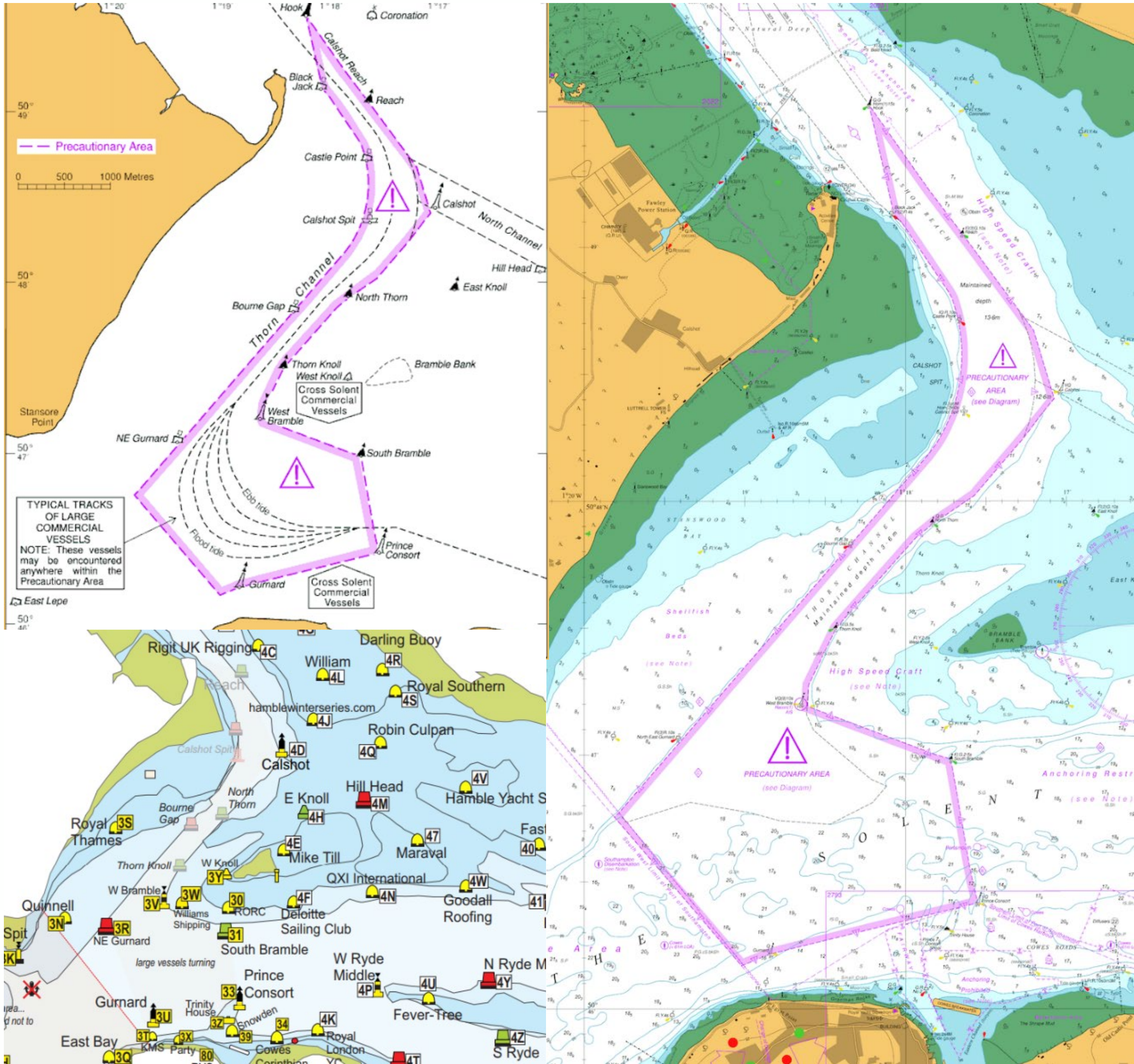
Commercial and Leisure: Safely sharing the same water



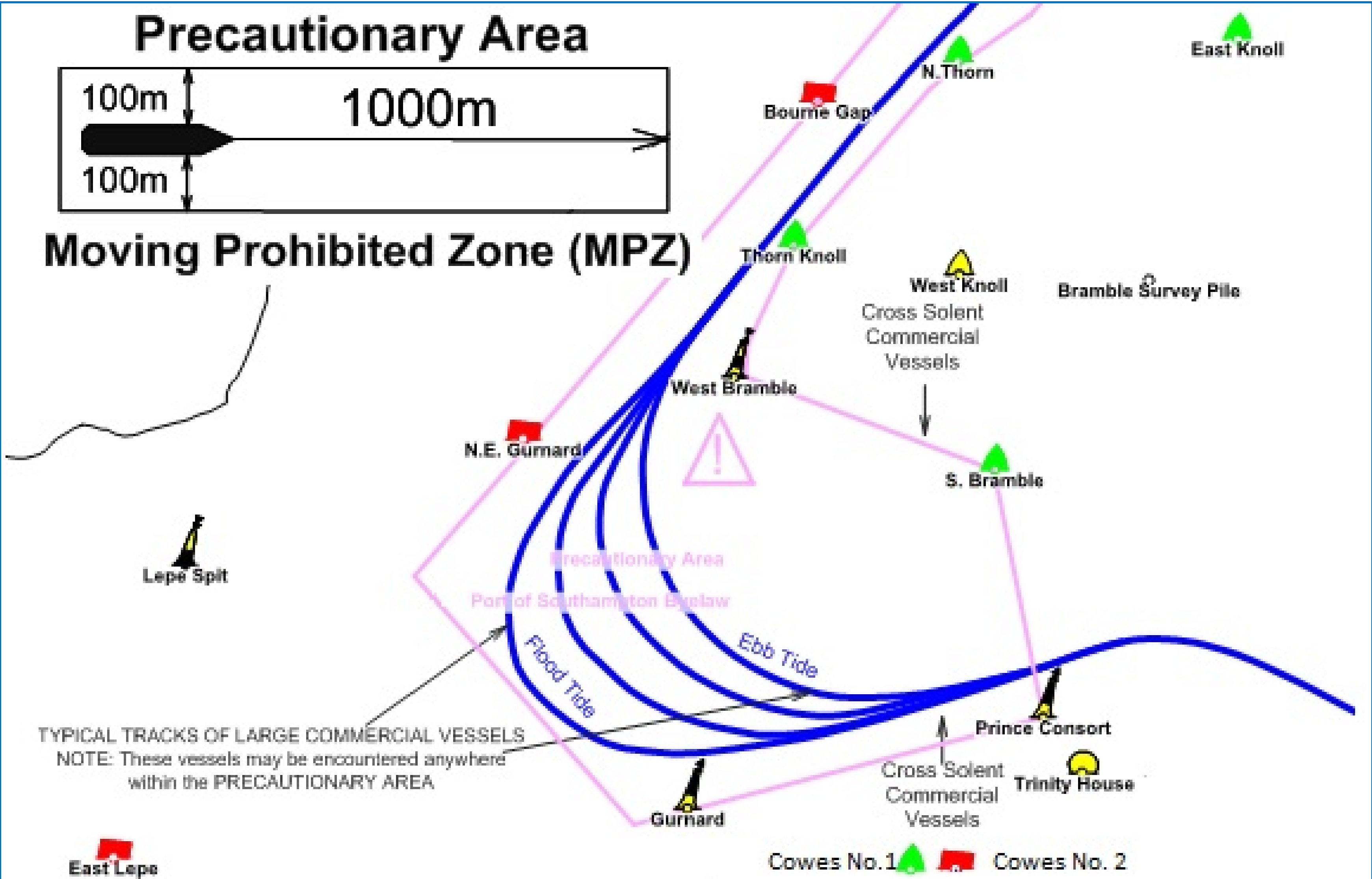
Precautionary Area

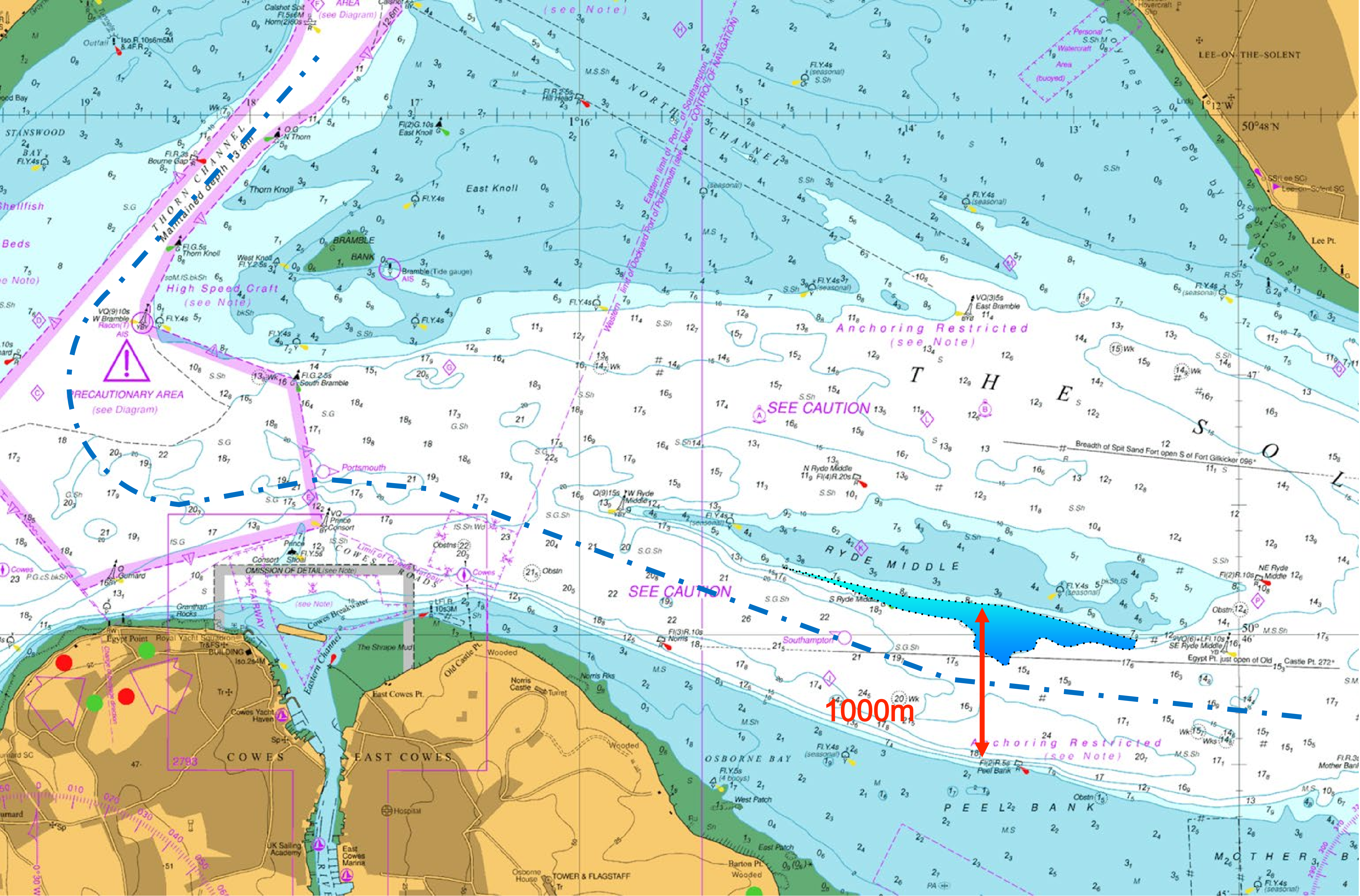
Established under the Southampton bye-laws, the precautionary area introduces the moving prohibited zone (MPZ):

“ Vessels under 20m and sailing vessels must stay 1000m ahead and 100m either side of any vessel in the PA over 150m. ”

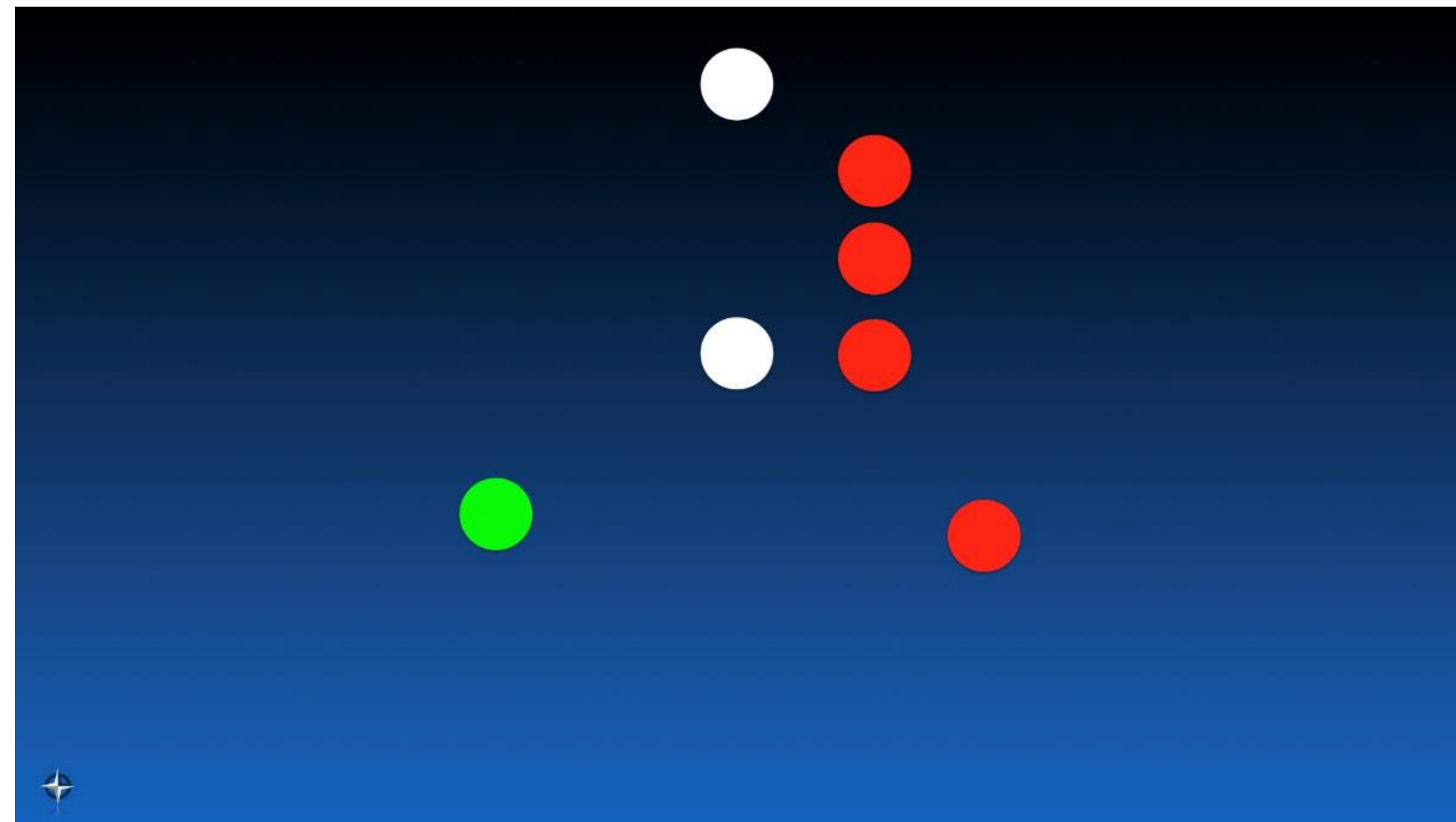


Precautionary Area





All vessels < 150m



Can we be seen?



The view from the bridge



Southampton Patrol



What can you do?

Take Early Action



**Obey Harbour
Master Instructions**



What does it mean to Impede?

To approach so as to involve a risk of collision or close quarters situation

To give cause for concern to the master and pilot of the ship

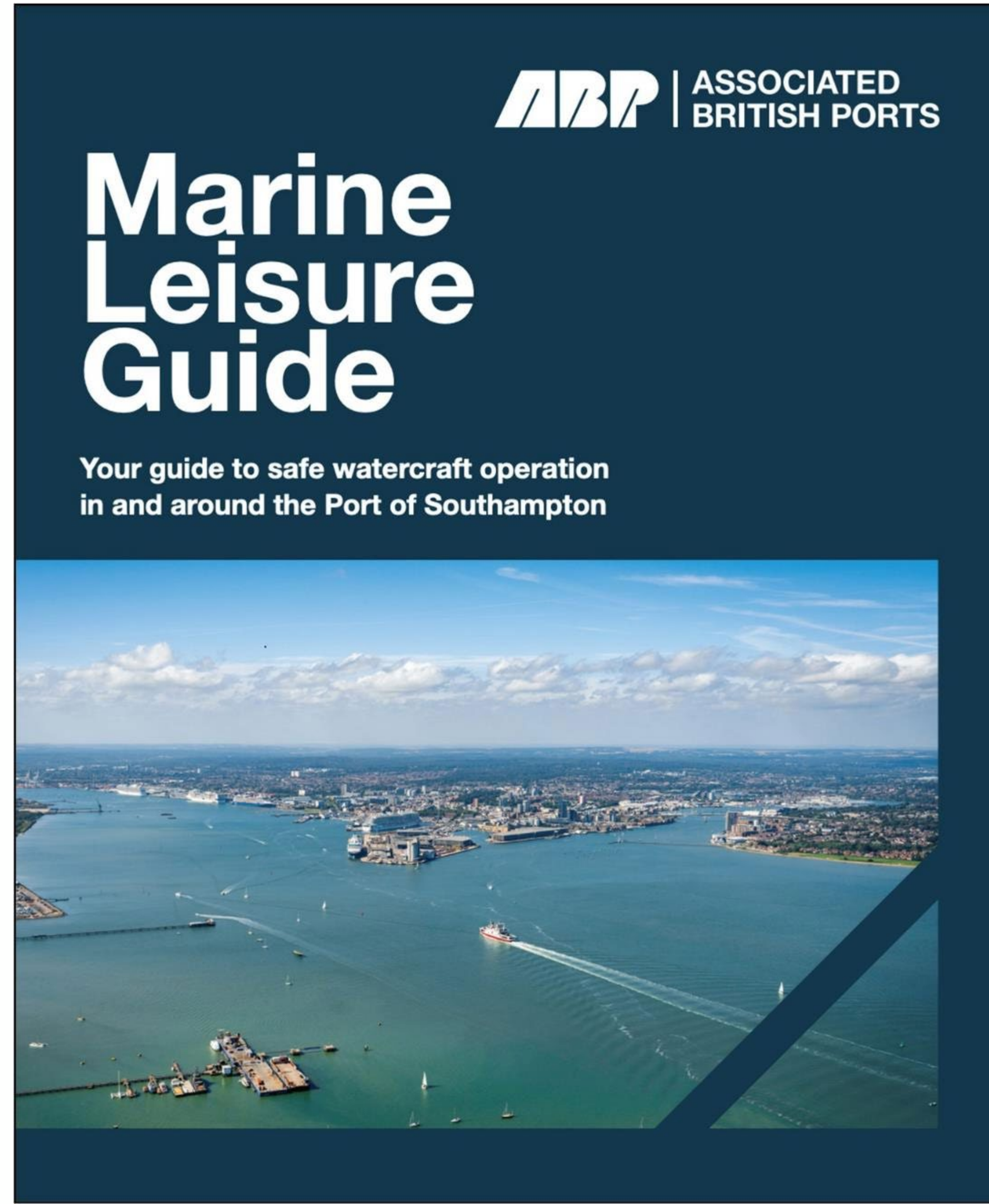
To not take early action to avoid either of the above

In the Thorn to pass within 1000m ahead or 100m either side of the ship

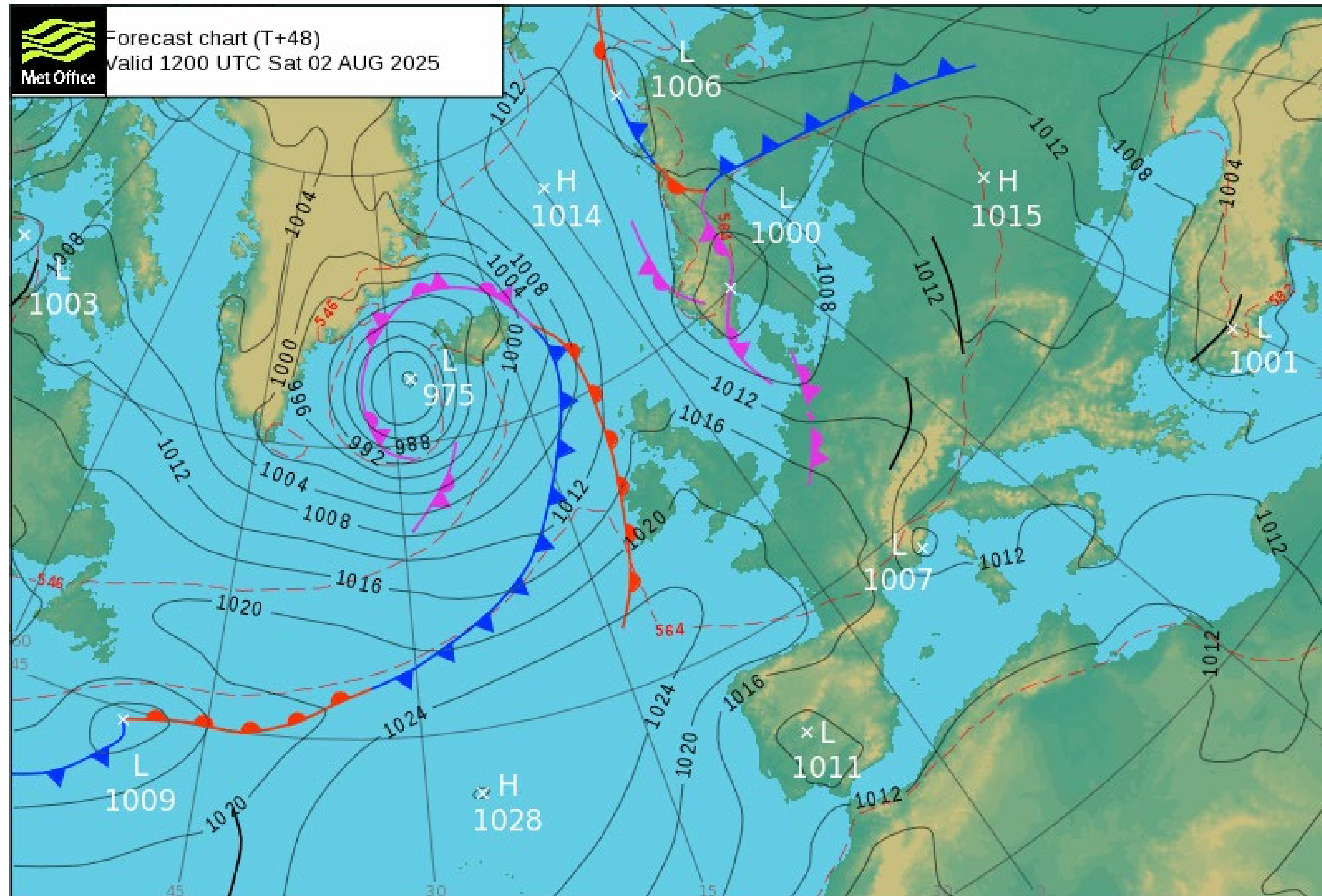
To move out of sight of the bridge team giving cause for concern



Further information

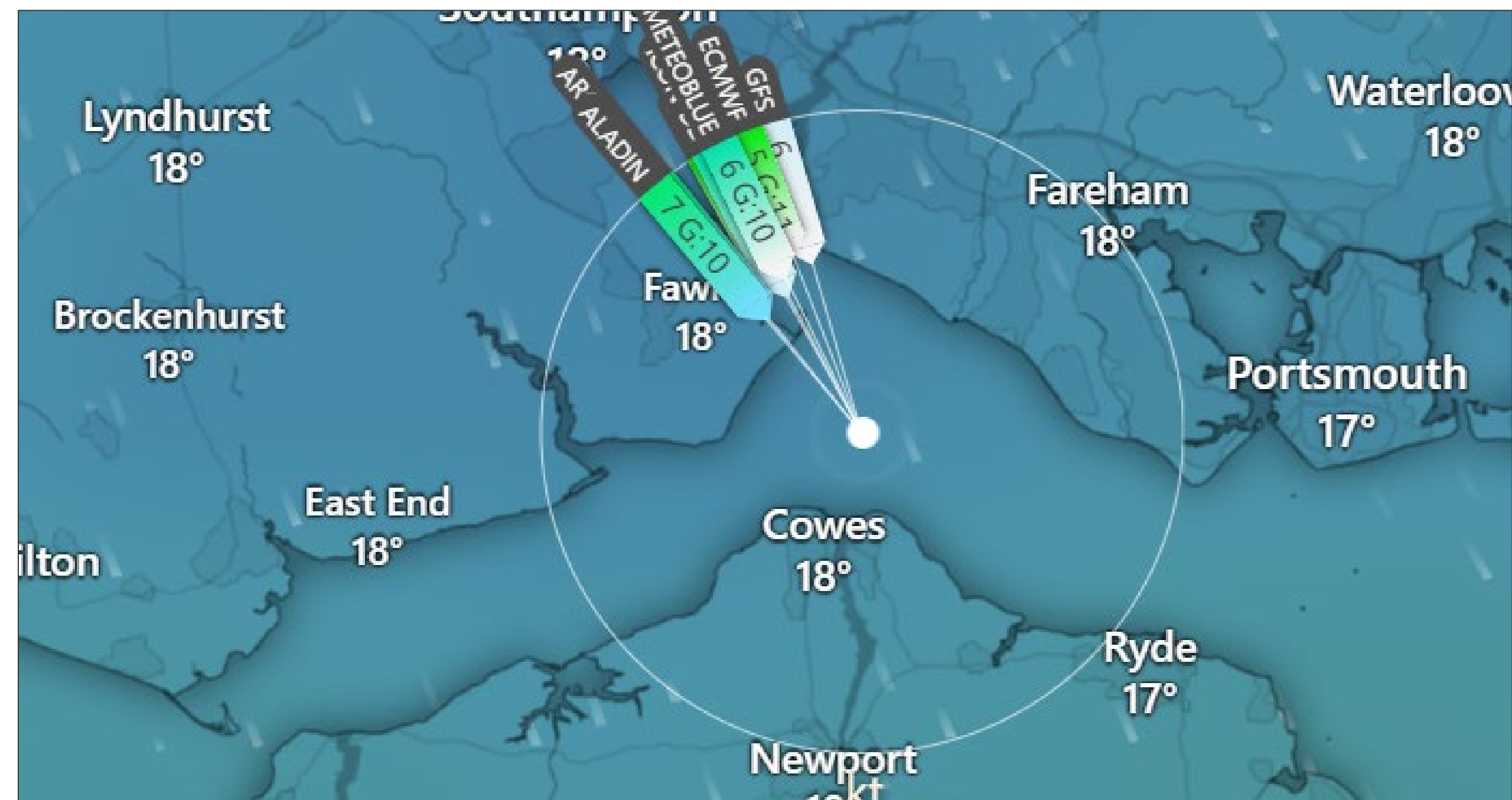


Weather - Saturday

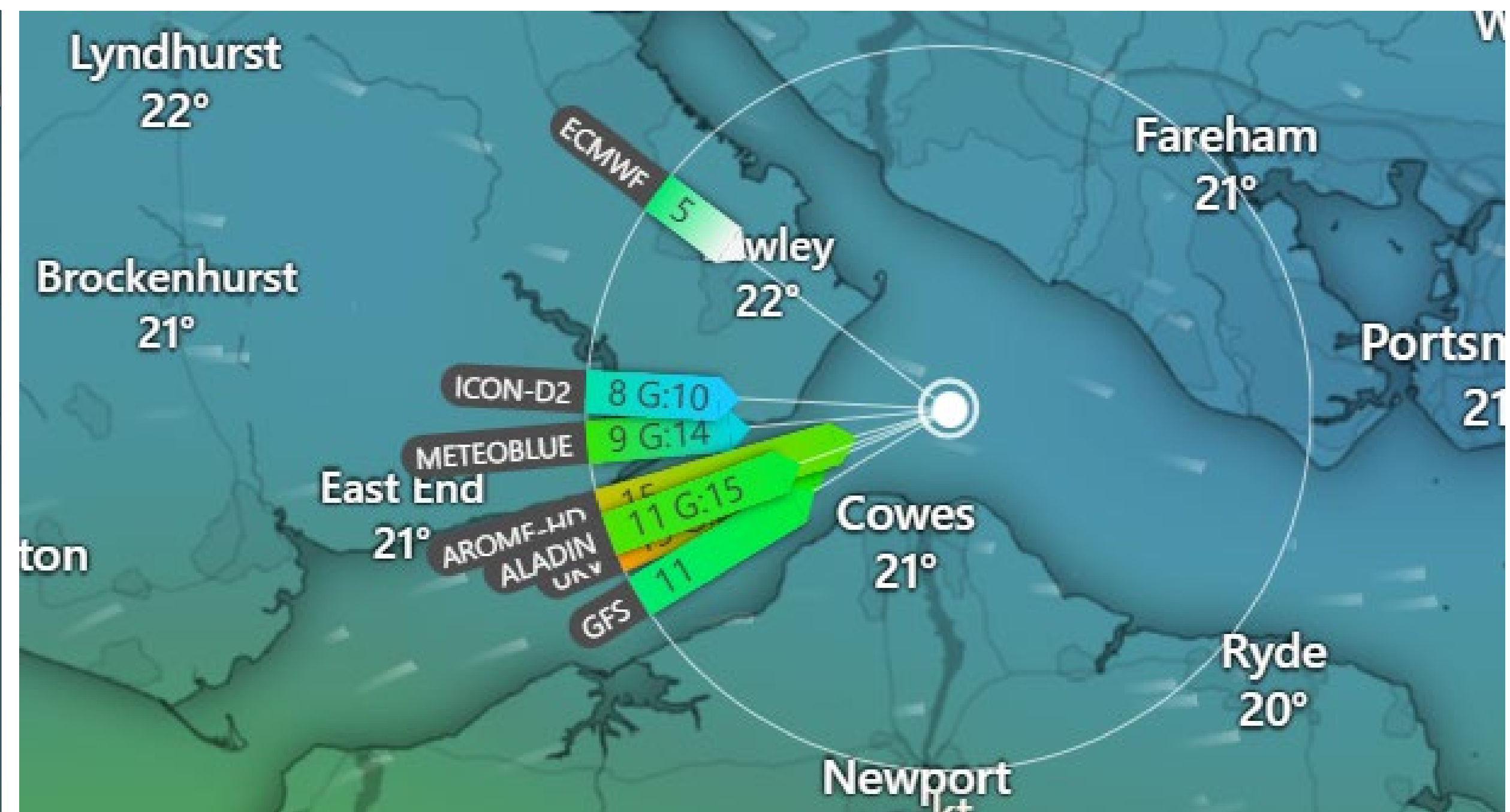


Light Northerly Gradient turning into a fresh Westerly as the influence changes from the old low to the new one.

Weather - Saturday

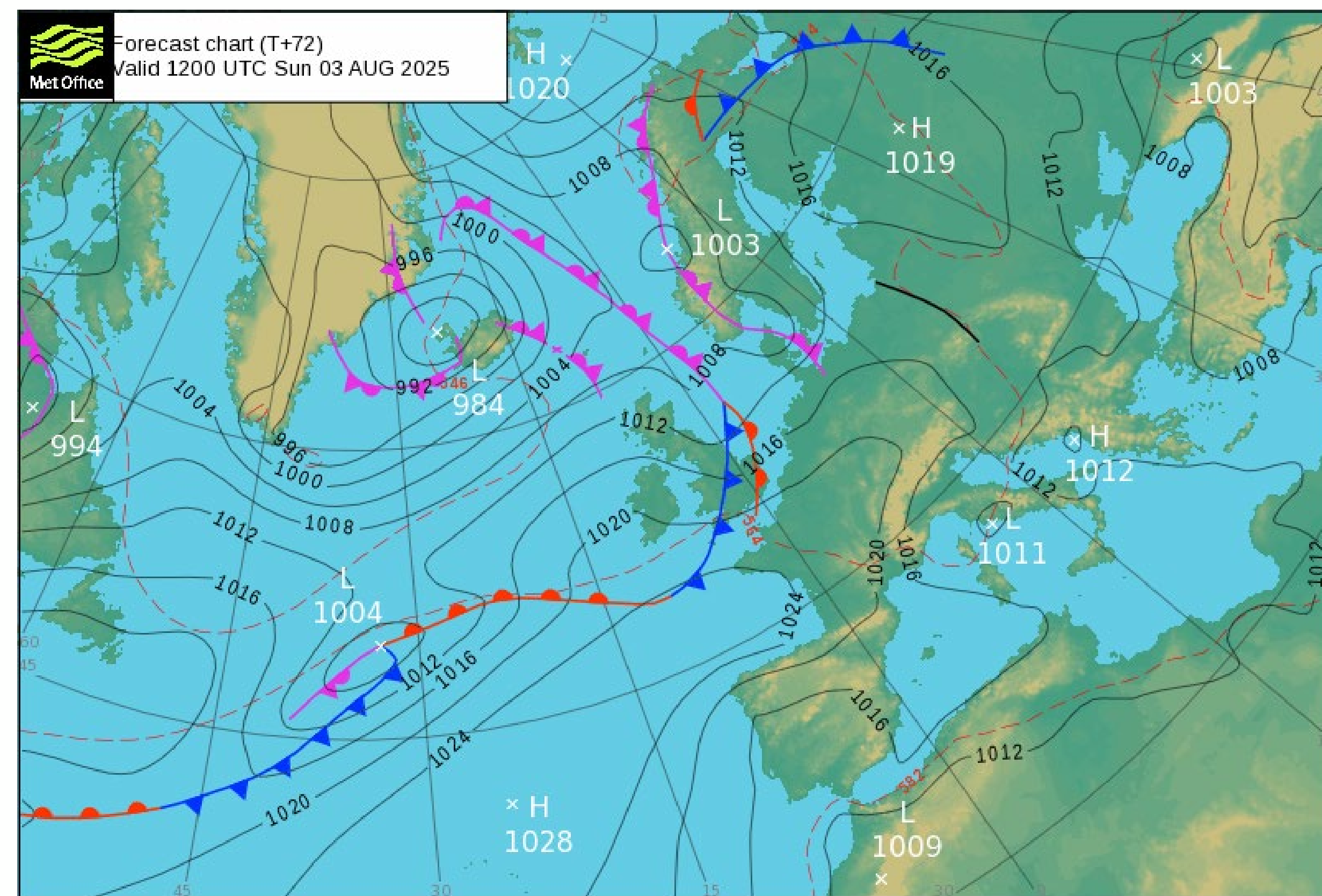


Northerly 1000



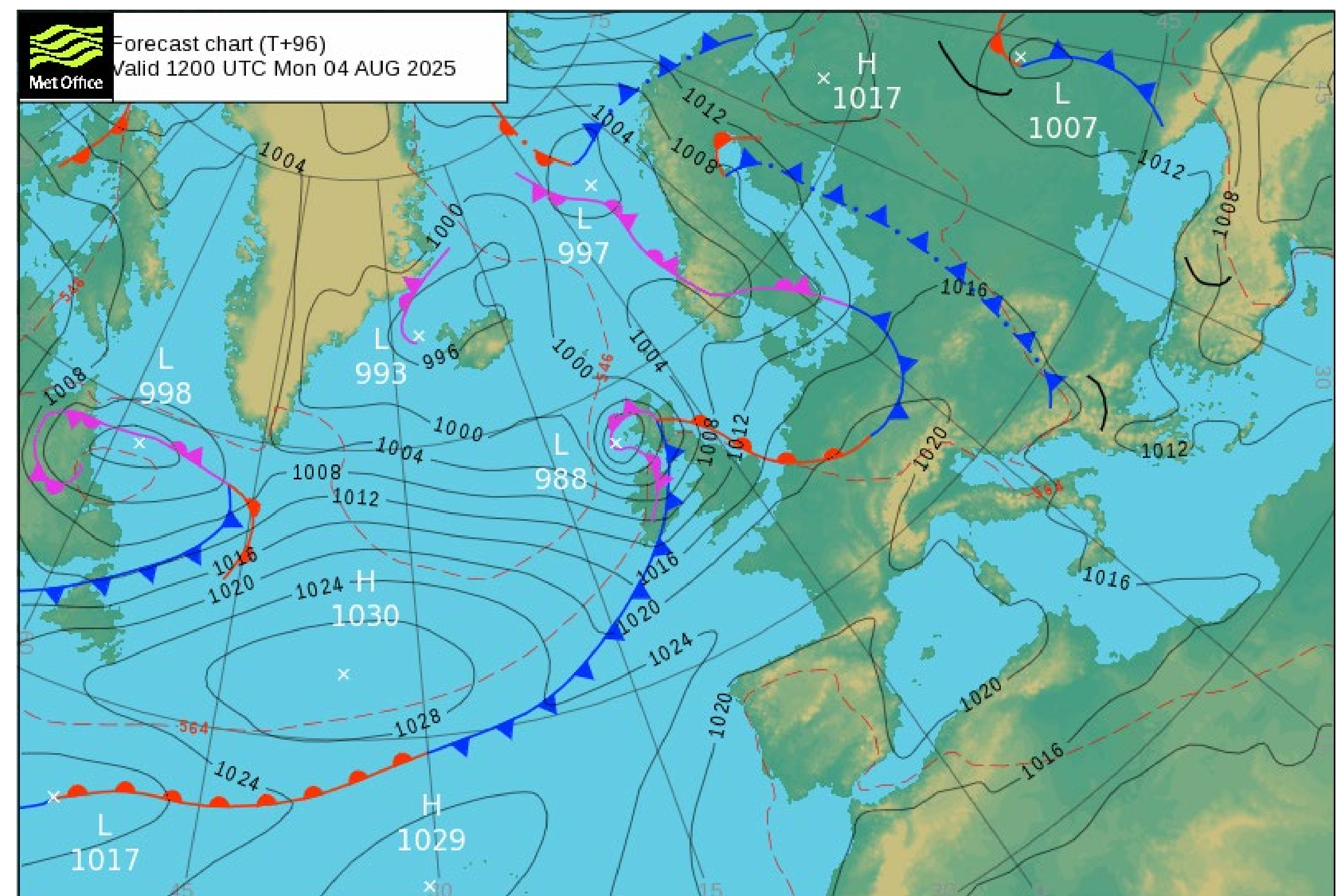
Westerly 1500

Weather - Sunday



Gradient Westerly- Plenty of showers

Monday



More Gradient as the low moves south!

Forecast- Saturday

Time of Day	Wind Speed (Knots)	Wind Direction (°T)	Gust Speed (knots)	Confidence	Temperature (°c)	Cloud Cover (%)	Precipitation chance (%)	Pressure (hPa)
9	8	330	12	Moderate	16	20	10	1019
10	7	330	11	Moderate	17	20	30	1019
11	6	330	14	Moderate	18	60	60	1019
12	6	330	13	Moderate	19	80	60	1019
13	6	320	12	Moderate	20	90	60	1019
14	6	320	13	Low	20	60	60	1019
15	10	300	18	Low	21	50	40	1019
16	15	270	20	Moderate	21	50	10	1018
17	16	250	22	Moderate	21	30	10	1018
18	16	250	20	Moderate	20	20	10	1018
19	16	230	20	Moderate	19	10	10	1018

Forecast- Outlook

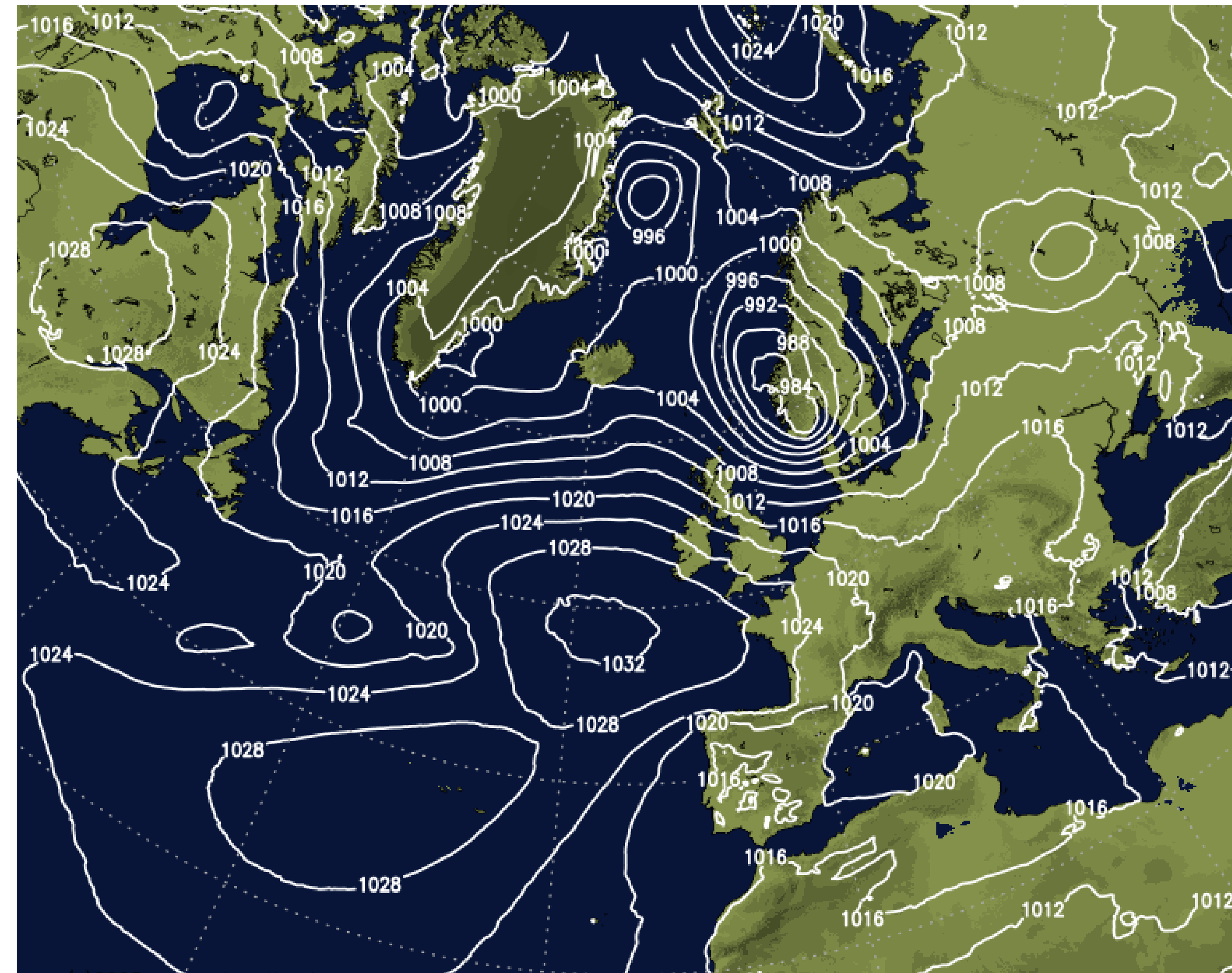
Day	Wind Speed (Knots)	Wind Direction (°T)	Gust Speed (knots)	Confidence	Temperature (°c)	Cloud Cover (%)	Precipitation chance (%)	Pressure (hPa)
Sunday	13	230	24	Moderate	20	90	90	1019
Monday	13	230	24	Moderate	19	60	90	1016
Tuesday	11	280	20	Moderate	20	60	30	1024
Wednesday	4	300	12	Moderate	20	20	10	1026
Thursday	8	300	12	Moderate	21	10	10	1020
Friday	6	320	15	Low	23	30	10	1010
Saturday	13	300	20	Low	22	30	20	1015

Weather - Tuesday and Wednesday

Thu 31/07 12Z

UKMO Sea Level pressure

Tue 05/08 12Z

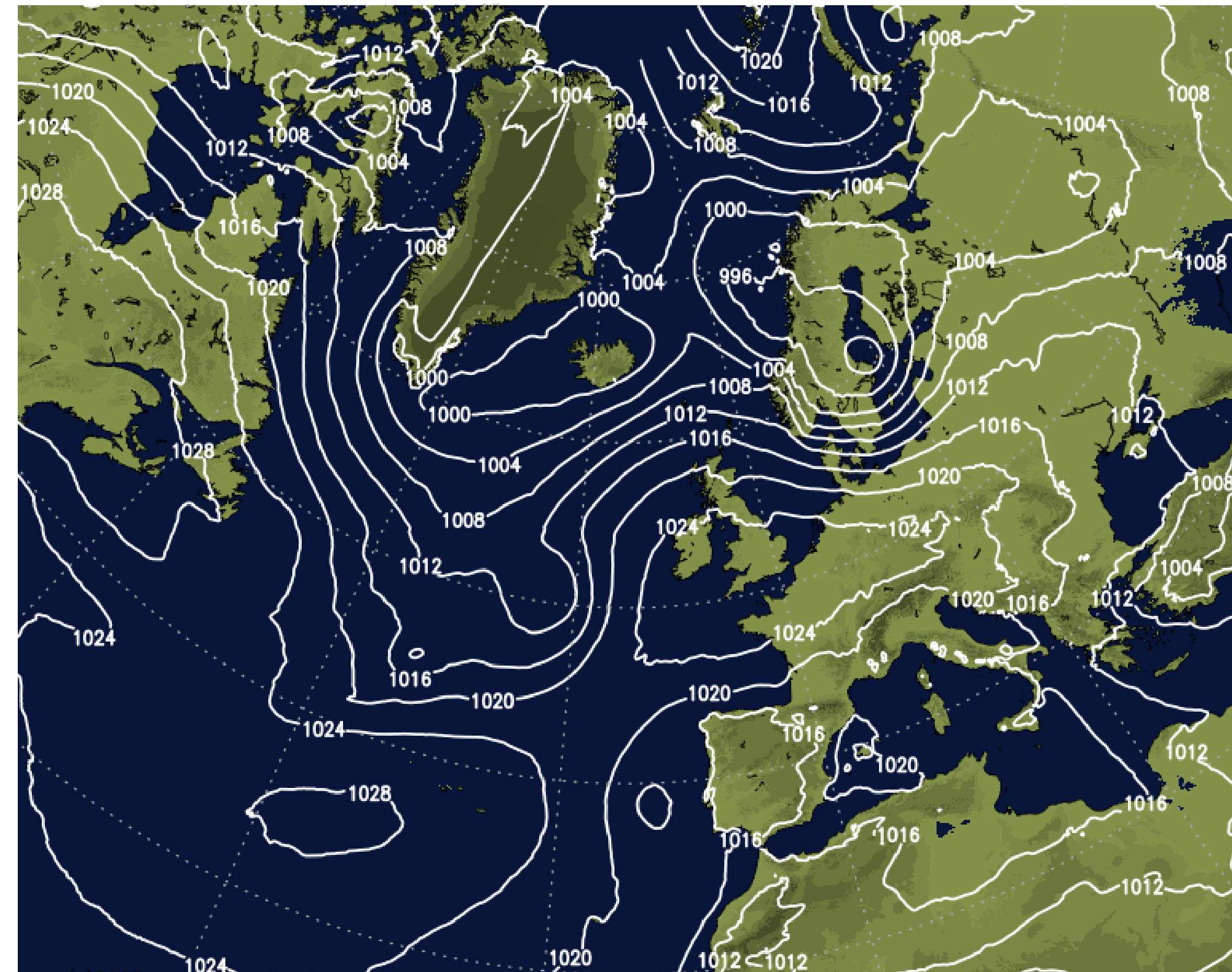


(c)2025 www.netweather.tv

Thu 31/07 12Z

UKMO Sea Level pressure

Wed 06/08 12Z



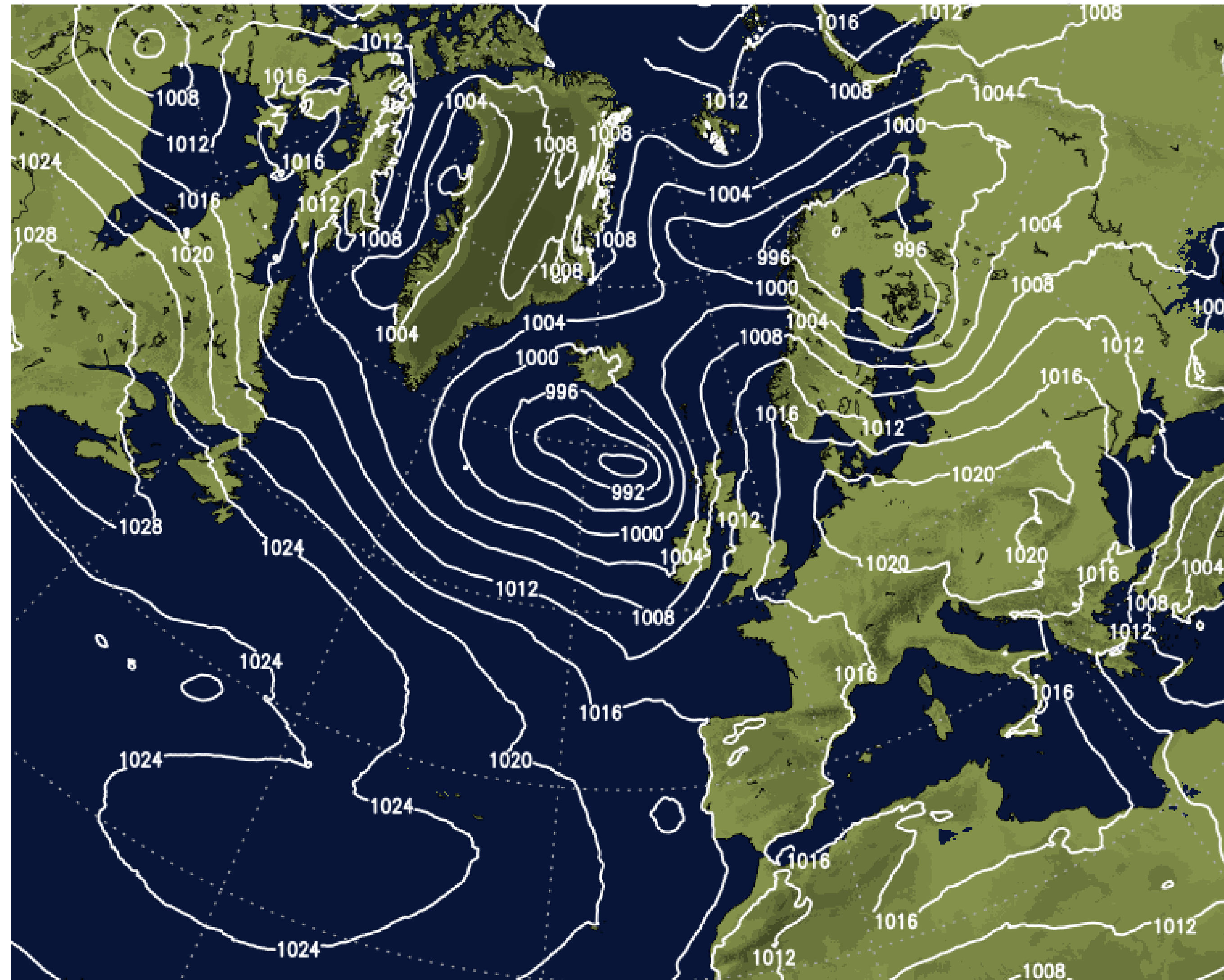
(c)2025 www.netweather.tv

Weather Thursday

Thu 31/07 12Z

UKMO Sea Level pressure

Thu 07/08 12Z



(c)2025 www.netweather.tv



Questions?

