



SAILING INSTRUCTIONS

2 - 8 AUGUST

SPONSORS

OFFICIAL PARTNERS



OFFICIAL MEDIA PARTNERS



OFFICIAL WEATHER FORECAST SPONSOR

OFFICIAL SIGNATURE PARTNERS



OFFICIAL CHARITIES



OFFICIAL SUPPLIERS



CONTENTS

- 2 SAILING INSTRUCTIONS
- 5 RYA PRESCRIPTIONS
- 6 SAILING INSTRUCTIONS APPENDICES A - F
- 8 VHF CHANNELS
- 8 DISCARDS
- 9 CHANGES TO RRS RACE SIGNALS
- 9 DEFINED WINDWARD LEEWARD COURSES
- 10 RACING MARKS
- 12 START AND FINISH LINES, FAIRWAYS AND RESTRICTED AREA

ABBREVIATIONS AND DEFINITIONS

CWL : Cowes Week Limited.

Regatta : Cowes Week 2025

Regatta Centre : Regatta House, 18 Bath Road, Cowes, Isle of Wight, PO31 7QN.

RRS : World Sailing Racing Rules of Sailing. Note that these Sailing Instructions contain many references to the RRS and competitors are advised to have a copy to hand.

SIs : Sailing Instructions. This booklet, including all appendices and supplements.

NoR : The Notice of Race produced by CWL.

RYS : Royal Yacht Squadron.

ONB : Notices to competitors will be posted on the Official Website and the App.

Official Website : www.cowesweek.co.uk.

App : The official Cowes Week App, available for download by any competitor from the Apple App Store or Google Play.

Official Programme : the official programme produced by CWL.

EventTV : The Regatta TV station which may be broadcast on screens around Cowes and online.

References : All references in these Sailing Instructions to a paragraph or page number refer to this Sailing Instructions booklet unless specified otherwise.

Mark ID / Line ID : This is a 2 character ID which identifies a racing mark or finish line. A complete list is shown in Table 4: Racing Marks.

Black Group consists of the following classes: IRC 0-7, Cape 31, Contessa 32, J/109, Quarter Ton, Sigma 33, Performance Cruisers A & B and Club Cruisers C & D.

White Group consists of the following classes: Daring, Dragon, Etchells, Flying Fifteen, J/70, Redwing, SB20, Seaview Mermaid, Solent Sunbeam, Sonar, Sportsboat, Swallow, Victory and XOD.

EMERGENCY PROCEDURES

In the event of an incident that involves personal injury or severe illness, or where the boat is in danger and needs assistance, crews should contact Solent Coastguard on VHF Channel 16 (or by telephone via 999). The Coastguard will then initiate the appropriate action.

Emergency Landing

Vessels should land casualties at Trinity Landing off the Parade, unless otherwise directed. This location provides the shortest route to the casualty unit at St Mary's Hospital, Newport, and allows easy access for vehicles.

First Aid Facilities

First Aid Facilities are located at the Regatta Centre, Cowes Yacht Haven, and Cowes Medical Centre on Newport Road. In addition to the normal national 999 telephone number, there is a free number for urgent but non-emergency calls to the NHS, this being 111. This number makes it easier and quicker for patients to get the treatment they need.

USEFUL PHONE NUMBERS

Regatta Centre : 01983 295744

Protest Office : 01983 248004

Safety Officer : 01983 244848

SAILING INSTRUCTIONS

1 RULES

- 1.1 The Regatta will be governed by the rules as defined in the Racing Rules of Sailing (RRS).
- 1.2 The Prescriptions of the Royal Yachting Association (RYA) will apply as set out on page 5.
- 1.3 Sentences in italics within these Sailing Instructions are guidance notes for information only.
- 1.4 Navigation Restrictions & Local Byelaws: Restrictions in operation during Cowes Week are detailed in Appendix B.
- 1.5 Appendices within these Sailing Instructions, together with the Supplement referenced in SI 6.1, rank as Sailing Instructions.
- 1.6 Changes to Class Rules will apply as set out in the NoR and Appendix A.
- 1.7 The notation '[NP]' in the Sailing Instructions (SIs) means that a boat may not protest another boat for breaking that rule. This changes RRS 60.1.

2 CHANGES TO SAILING INSTRUCTIONS (SIS) OR SCHEDULE OF RACES

- 2.1 Subject to SI 2.2, any Amendment to the SIs will be posted on the ONB before 0830 on the day it will take effect.
- 2.2 For safety, weather or other reasons, the Race Committee may change the schedule of start times and start lines for one or more classes at least one hour before the start of those classes affected. This information will be promulgated by VHF and within the App.
Usually the Race Committee aims to announce any change to the schedule by 2030 on the evening before it is to take effect.
- 2.3 The latest amendment number will be indicated by a signal displayed at the flagstaff at the Royal London Yacht Club on Cowes Parade. The signal will consist of code flag 'L' over a numeral pennant indicating the latest numbered amendment issued.

3 COMMUNICATIONS

- 3.1 Notices to competitors will be displayed on the ONB.
- 3.2 For radio channels see Table 1: VHF Communications on page 9.
- 3.3 For use of the App and how to register, see Appendix C1.
- 3.4 There will be a skippers' briefing for all classes in the Event Centre at Cowes Yacht Haven at 18:30 on Friday 1 August.
It is strongly recommended that one or two people from each boat attend the briefing.
Information which may be broadcast on any event radio or TV is not an official communication and may not be relied upon.

4 CODE OF CONDUCT

- 4.1 Competitors and support persons shall comply with reasonable requests from race officials.
- 4.2 RYA Charter: see Notice of Race paragraph 1.4.

5 SIGNALS MADE ASHORE AND AFLOAT

- 5.1 Signals made ashore at the RYS apply only to boats scheduled to start on one of the RYS Start Lines
- 5.2 Signals made on a Committee vessel (CV) apply only to boats scheduled to start on that CV's Start Line.
- 5.3 Signals made at the Royal London Yacht Club: see SI 2.3.
- 5.4 Signals displayed over a white flag apply only to boats in White Group.
- 5.5 Signals displayed over a black flag apply only to boats in Black Group.

5.6 General Postponement

The display of flags AP over AP accompanied by 2 sound signals means that the next Warning Signal will be not less than 55 minutes after the signal is removed (with one sound signal) and replaced by a single AP flag. This amends RRS 27.3 and Race Signals.

6 SCHEDULE OF RACES

- 6.1 The schedule of start times and allocation of start lines will be published in a separate Supplement, which will form part of these SIs, and be available from the Regatta Office at registration and on the Cowes Week website by Friday 1 August 2025.
- 6.2 The schedule may be changed during the Regatta, see SI 2.2.
- 6.3 Where a class has a second or third race scheduled on a particular day, these races will start from the schedule start line as soon as possible after the end of the previous race..
- 6.4 For any class for which extra races have been agreed in accordance with NoR 8.3.1, the schedule of races will be published in accordance with SI 6.1.
- 6.5 It is intended that the first warning signal will be no earlier than 1000 each day.

7 CLASS FLAGS

See NoR Tables 2 and 3.

8 RACING AREA

See NoR paragraphs 10.1 and 10.2.

9 COURSES

- 9.1 Courses will use marks listed in Table 4. Announcements by VHF and App will include the two-character IDs shown in this table. See also Appendix C - Communications on page 9.
- 9.2 All marks except gates are to be rounded unless specifically identified as passing marks when the words 'pass to port/starboard' will be used.
- 9.3 Any mark may be designated as a gate. Except for the defined windward leeward courses (SI 9.5), the gate will consist of the designated mark and a nearby Committee Vessel displaying Flag M and the following shall apply:

- a. The mark will be specified in the VHF course announcements as a gate.
 - b. Boats shall pass between the designated mark and a nearby Committee Vessel displaying flag 'M' from the direction of the previous mark and round either the buoy or the Committee Vessel.
- 9.4 The course for the next class to start will be announced on VHF radio. Courses will also be displayed in the App.

9.5 Defined windward leeward courses

- a. Defined windward leeward courses may be used for classes starting on the Committee Vessel lines. These are shown in Diagram 1.
- b. In courses LA, LAR, LC & LAC, a change to a leg of less than 20° in direction or 300m in length may be made without signalling a change. This changes RRS 33.
- c. Except when SI 9.5 (b) applies, to change the next leg of the course, the race committee will lay a new black inflatable change mark to replace mark 1 or move the gate marks (4p/4s) or move the finishing line. When mark 1 has been changed, mark 1a is no longer a mark of the course. The original mark 1 and 1a will be removed as soon as possible. This changes RRS 33.
- d. In courses LA, LAR & LAC, if one of two gate buoys is missing and has not been replaced as described in RRS 34 then the remaining buoy shall be rounded to port. If mark 1A is not laid or is missing then mark 1 shall be rounded to port before proceeding to the leeward gate. This changes RRS 34.

10-11 NOT USED

12 THE START

- 12.1 Races will be started using RRS 26 with the warning signal made 5 minutes before the starting signal.

12.2 Start Lines

There are several possible start lines:

- a. RYS Start Line, which is an extension of the line formed by bringing the RYS main flagstaff (80) into line with the white line on the orange diamond on the roof of the RYS. The outer distance mark will be Alpha (8A). Vertical Light Beams SI 12.7 and Direction of the Start SI 12.8 will apply.
- b. RYS Outer Start Line, which is an extension of the line formed by bringing the RYS main flagstaff (80) into line with the white line on the orange diamond on the roof of the RYS. The outer distance mark will be Williams Shipping (3W). The inner distance mark will be Alpha (8A). Vertical Light Beams SI 12.7 will apply. Direction of the Start SI 12.8 will not apply.
- c. Committee Vessel Start Lines (CV1, CV2, CV3 etc). Each Line is between staffs, each displaying an orange flag, on Committee Vessels at each end of the line or between a staff displaying an orange flag on the Committee Vessel and an outer distance mark. The location of the Committee Vessel will be announced by reference to the nearest racing mark.

12.3 Committee Vessel Start Lines

On all Committee Vessel start lines:

- a. Before starting and if possible before the Warning Signal, all boats shall pass close to the stern of the main Committee Vessel whilst displaying their sail number and await acknowledgement that they have been identified.

- b. An inner distance mark may be laid near any of the start line Committee Vessels and shall rank as a starting mark. After the one-minute signal for each race and before starting and clearing the line, boats shall not cross the line between this inflatable mark (if laid) and the staff with orange flag on the nearby Committee Vessel. Boats infringing this rule will be scored DNS unless they exonerate themselves by rounding the nearby Committee Vessel, leaving it to starboard before starting.

12.4 Keeping clear at the start [NP]

Boats whose warning signal has not been made shall keep clear of boats whose preparatory signal has been made. An infringement of this rule may result in a time penalty of 3% being given by the Race Committee, without a hearing in accordance with RRS 60.5(b)3. Subsequent infringements during the Regatta may result in the boat being disqualified by the Race Committee without a hearing. This changes RRS 60.1 and 63.1.

12.5 Start line penalties

- a. If code flag X has been displayed at the start, it will be displayed for four minutes. This changes RRS 29.1.
- b. The Race Committee may maintain a video record of the start sequence. This is for the sole and exclusive use of the Race Committee so that they can verify, in a timely manner, the boats that are to be scored OCS, penalised as the result of a Z-flag penalty or disqualified as the result of a U-flag, or black-flag penalty.
- c. Boats that have been scored OCS or penalised may request the video evidence from the Race Committee be reviewed by submitting a competitor query form at the Regatta Centre Information Office. They will not normally be allowed to view the video themselves but the video will be reviewed by members of the Protest Committee who may confirm or change the OCS or penalty.

12.6 General Recall

If a general recall is signalled after the start signal for one class which was also the warning signal for the next class, the display of flag First Substitute will simultaneously signal the general recall of the first class and the postponement of the start sequence for the second class. Flag AP will not be displayed in addition. First Substitute will be removed one minute before the next warning signal for the recalled class, whose start signal will also be the warning signal for the second class. This changes RRS Race Signals.

12.7 Vertical Light Beams on RYS Lines

- a. Vertical light beams are installed at the RYS to help identify the start line transit for RYS Start Line and RYS Outer Start Line.
- b. The intensity of the light beam increases as the transit is approached, and at the approximate point of the transit, the flagstaff obscures the lower rear light.
- c. These lights are a navigational aid only and do not constitute the start line, nor will a start be postponed because of any failure of the equipment.

12.8 Direction of the Start on RYS Line

- a. For starts on the RYS Start Line, a signal displayed on a flagstaff at the north-east corner of the RYS Haven prior to the first warning signal of the day will indicate the start direction, with a green flag for a start to the west and a red flag for a start to the east. After a postponement, this signal may be changed to reverse the direction of subsequent starts.
- b. This SI does not apply to the RYS Outer Start Line or to any Committee Vessel Line.

13 SHORTENING COURSE

- 13.1 Courses may be shortened at any rounding mark or gate in accordance with RRS 32.2. The Committee Vessel may hold position using her engines.
- 13.2 If not all classes rounding the mark are being shortened at the mark, class flags will be displayed to show which classes are being finished.

13.3 Special Scoring Provisions

CHANGING RRS 35, RRS A5.2 & RRS A9

- In addition to RRS 32, when the Race Committee believe that boats are unlikely to finish within the time limit or boats do not finish within the time limit, they may score boats in the order, corrected on handicap if appropriate, that they passed through the last gate or mark at which the Race Committee are able to establish a finishing order.
- The Race Committee may signal this by the display of flags "S" over "3rd Substitute" and by announcement by VHF (See Table 1 : VHF Communications - page 9).
- For One Design Classes, no boat shall be scored better than any boat that completed the course before "S" over "3rd Substitute" has been displayed. This will not apply to boats racing under IRC or ISCRS ratings.

14 THE FINISH

14.1 Choice of Finish Line

The Finish Line to be used will be indicated by the last mark ID of the course. The scheduled finish will normally be at one of the standard finish lines (SI 14.2) but may be at another mark (SI 14.3).

14.2 Standard Finish Lines

- RYS Line (81), between the RYS flagstaff (80) and Alpha (8A).
- RYS Outer Line (89), between Alpha (8A) and Williams Shipping (3W).
- Breakwater Finish Line (88), between Gamma (8G) and a staff displaying a large blue flag on a Committee Vessel moored south of this mark. There may be an inflatable inner distance mark close by the Committee Vessel, in which case boats shall pass to the north of this buoy when finishing.
- Committee Vessel Finish Line when using Defined Courses : see Diagram 1.

14.3 Finishing at other marks

If the scheduled finish is to be anywhere except at one of the standard lines described above, the finish line shall be between the mark indicated as the last mark of the course and a staff displaying a blue flag on the finishing Committee Vessel.

Note: It is intended to use Committee Vessel 1 to finish some classes on most days.

14.4 Keeping clear after finishing

After finishing, boats shall endeavour to keep clear of all boats that are racing, of all finish lines and shall take extreme care to avoid all commercial shipping.

14.5 Declarations

Declarations must be submitted for each race. See Appendix D.

15 PENALTY SYSTEM

See Appendix E.

16 TIME LIMIT

CHANGING RRS 35, A4 & A5.

- 16.1 Except as indicated in SI 16.2, the time limit for all boats will be:
- 1800 for all races from Saturday to Thursday.
 - 1700 for all races on Friday.
 - If the first boat in the class that appears to have sailed the course as required by RRS 28.1 finishes within one hour prior to the time limit, then the time limit for that class will be extended by one hour. As soon as data is validated, announcements will be made on the appropriate VHF channel shown in Table 1 : VHF Communications.
 - If no boat in a class finishes within the time limit, the race for that class will be abandoned, except where SI 13.3 applies.
 - Boats that do not finish within the time limit will be scored DNF, except where SI 13.3 applies.
- 16.2 Where a class has more than one race scheduled on a day, boats in all but the final race of the day not finishing within 30 minutes after the first boat in the class finishes will be scored DNF. At the end of that time, international code flag 'K' over the class flag will be displayed by the Committee Vessel (and may be accompanied by 5 sound signals).

17 HEARING REQUESTS

See Appendix F.

18 SCORING

- See the NoR for scoring details.
- Discards : See Table 2 : Class Discards.

19 SAFETY

- 19.1 Safety equipment regulations apply as described in the NoR paragraph 2.3 and detailed in the Safety Booklet.

Attention is drawn to the Cowes Week Safety Booklet which may be found on the official Cowes Week website.

19.2 Use of engine or other means of propulsion in accordance with RRS 42.3 (i)

- In order to avoid the risk of collision with commercial shipping that is under way, a boat may use her engine, or any other means of propulsion, without retiring.
- Such use shall be reported to the Protest Committee at the Protest Office at Regatta Centre, who shall decide what, if any, penalty to award.
- Boats should have an alternative means of propulsion ready for immediate use if there is any possibility of a close quarters situation developing between them and a commercial vessel.

19.3 Class & Boat Identification [NP]

- a. Boats shall carry all forms of identification (sail numbers, class flags, class numerals and sail number dodgers) as described in the NoR. An infringement of this rule may result in a time penalty of 1% being given by the Race Committee, without a hearing, in accordance with RRS 60.5(b)3.
- b. Boats shall ensure that their sail numbers are in a suitable contrast to the sail so as to be easily identified by the Race Committee.

19.4 Tracking [NP]

For safety and race management purposes, boats while racing shall register, carry and use a CWL approved tracking device, which shall be one of the following:

- a. An AIS transponder. Competitors shall use their best endeavours to ensure that the device is switched on and transmitting at least once every 5 minutes; or
- b. A compatible mobile device running the App. Competitors shall use their best endeavours to ensure that their boat has one or more such devices onboard and operating. Multiple devices are encouraged to ensure compliance with this SI.

19.5 Retirement [NP]

A boat that retires from a race shall inform the Race Committee as soon as possible by using the App (see Appendix D) or by VHF (see Table 1 : VHF Communications).

20-28 NOT USED

29 PRIZES

See NoR paragraph 16.

30 RISK STATEMENT

See NoR paragraph 14.

31 INSURANCE

See NoR paragraph 15.

RELEVANT RYA PRESCRIPTIONS TO THE RRS

Rule 6 : Anti-Doping

The national authority procedural rules required to implement the World Anti-Doping Code through ISAF Regulation 21 are the RYA Anti-Doping Rules, as published on the RYA website.

Rule 40 : Personal Flotation Devices

When a rule requires a personal flotation devices to be worn, the device shall comply with the specifications for the personal flotation device that the boat is required to carry. If more than one specification applies, the personal flotation device worn shall comply with the highest of them.

Rule 65.1 : Legal Liability and Costs

1. Any issue of liability or claim for damages arising from an incident while a boat is bound by the Racing Rules of Sailing shall be subject to the jurisdiction of the courts and not considered by a protest committee.
2. A boat that takes a penalty or retires does not thereby admit liability for damages or that she has broken a rule.

Rule 78 : Compliance With Class Rules - Certificates

R78.3 The Race Committee, or Technical Committee, may inspect or measure any **boat** or **personal equipment** at any time. Terms in bold are as defined in the Equipment Rules of Sailing.

Appendix R : Procedures For Appeals And Request

R2.1 Submission of Appeal

Rule 2.1 shall apply except as changed by the following:

1. The appellant shall notify RYA Racing stating an intention to appeal within the relevant time limit in rule R2.1. No details are needed at this stage.

2. Within 15 days thereafter, the appellant shall send to the RYA a completed appeal form with a copy of the Protest Committee's decision and other documents listed in rule R2.2, all as far as reasonably possible.
3. Unless the appellant is a personal member of the RYA, an appeal fee, stated on the appeal form, is payable to the RYA and should be sent with the appeal form.
4. The appeal form is available from www.rya.org.uk/go/rules or by request to RYA Racing.

R2.4 Failure to comply with Procedures for Appeal or Request

Add new rule R2.4: If the appellant does not comply with rule R2.1 as prescribed or the Protest Committee does not comply with rule R2.3, the RYA will refuse to hear the appeal unless there are exceptional circumstances. If other parties to the protest or the Protest Committee do not meet the requirements of the procedure, the RYA may decide the appeal as it thinks fit.

World Sailing Regulation 20 Advertising Code

20.2.3 Right to display advertising on a boat

When the right to display advertising on a boat is subject to prior authorisation by the national authority in accordance with regulation 20.2.3.3, the approval of the RYA is automatically granted provided that such advertising is permitted by the relevant rules of the class, rating system or handicapping system.

20.8.2 Fees

When the person in charge of a boat chooses to display advertising the RYA will not impose a fee as permitted by regulation 20.8.2.

APPENDICES

APPENDIX A - AMENDMENTS TO CLASS RULES

A1.1 SB20 Class

At the request of the class, there will be neither a maximum crew weight nor a maximum crew number nor a restriction on crew substitution. This changes class rule C3.1 and C3.2.

A1.2 XOD Class

Except as in A1.2c below, from 17:00 on the Friday immediately preceding the Regatta until 18:00 on the final day of the Regatta:

- a. Boats may only be cleaned below the waterline using a long handled brush or bottom floss from on board the boat while afloat, from a pontoon or from an alongside boat or rib.
- b. In compliance with Cowes Harbour Commission General Directions, no swimming or diving around a boat is allowed by an individual wherever the boat is located in the Cowes Harbour area.
- c. Dive cleaning of XOD bottoms by a company or persons with a formal permit from the Cowes Harbour Master is allowed, subject to a maximum of one dive clean in the period specified above.
- d. Hauling out of damaged boats during Cowes Week requires the prior written approval of the Class Captain, such approval to be given retrospectively in the case of an emergency haul out. Boats shall not be cleaned below the waterline during haul out, except as is absolutely essential in the immediate area of the repair.

APPENDIX B - NAVIGATION RESTRICTIONS

B1 DIRECTION NO. 25

KING'S HARBOUR MASTER PORTSMOUTH & ABP HARBOUR MASTER SOUTHAMPTON

1. Mariners are advised that the King's Harbour Master has made the following General Direction under the Dockyard Port of Portsmouth Order 2005 that any marine casualty or marine incident occurring with the Dockyard Port of Portsmouth is to be reported as soon as practicable to the King's Harbour Master. A marine casualty or marine incident in an event or sequence of events that has occurred directly by, or in connection with the operation of a vessel and has resulted in:
 - The death of, or serious injury to a person.
 - The loss of a person from a vessel.
 - The loss, presumed loss or abandonment of a vessel.
 - Material damage that significantly affects the structural integrity, performance or operational characteristics of the vessel.
 - The vessel requiring emergency towage or shore assistance.
 - The stranding or disabling of a vessel, or the involvement of a vessel in a collision.
 - Material damage to marine infrastructure external of a vessel that could endanger the safety of the vessel, another vessel or any individual.
 - Pollution.
 - Movement of, or damage to, navigational marks.
2. In these circumstances, a verbal report is to be made to the King's Harbour Master on VHF Ch 11 or by telephoning **02392 723 694**. Additionally, a written report shall be submitted at www.royalnavy.mod.uk/khm/portsmouth/safety-and-regulations/report-an-incident
3. Any marine casualty or marine incident within the area of Portsmouth International Port should also be reported to the harbour master, Portsmouth International Port on **023 9285 5900**.

B2 COWES OUTER BREAKWATER

Boats racing shall not pass to the south of the Cowes Outer Breakwater. See Diagram 2.

B3 RYS OUTER LINE [NP]

Boats starting or finishing on the RYS Outer line (89) shall not pass to the south of mark Alpha (8A).

B4 GOSPORT BOROUGH COUNCIL BYELAWS

While racing, boats shall observe the Gosport Borough Council byelaws relating to the bathing areas off Stokes Bay, an extract of which is reproduced in the Safety Booklet.

B5 ANCHORING

While racing, boats shall not anchor or kedge:

- a. Within the area shown on Admiralty Chartlet 5600-5 and 5600-6 denoting power and gas cables, between Stansore Point and Gurnard Bay.
- b. Within the area of Cowes Fairway bounded by No.1 Harbour Buoy and Alpha (8A) to the west and No.2 Harbour Buoy and Trinity House buoy (3Z) to the east (shown in Diagram 2).

B6 COMMERCIAL SHIPPING [NP]

B6.1 Boats shall observe the Associated British Ports Southampton (ABP) Harbour Byelaws 2003 (see Safety Booklet) at all times and must avoid any close quarters situation with large commercial shipping. Particular note should be made of Byelaws 10 & 11 and ABP Notice to Mariners No. 6 of 2025 giving details of a moving prohibited zone, which ranks as an obstruction for the purposes of RRS 19 and 20.

B6.2 Boats shall observe the Cowes Harbour Commission (CHC) General Directions and Notices to Mariners and their attention is particularly drawn to Local Notices to Mariners (shown in the Safety Booklet).

B6.3 For infringements of B6.1 and B6.2 by the Race Committee may initiate a protest as the result of a report from the vessel affected or one made by either ABP or CHC staff. This changes RRS 60. Additionally, ABP and/or CHC may initiate court proceedings against boats that infringe their byelaws and/or Notices to Mariners.

B7 SMALL CRAFT MOORINGS

B7.1 While racing, boats shall not enter the Restricted Area shown in Diagram 2 to the south of row J of small craft moorings, unless leaving their designated mooring. Row J is the northern most row of small craft moorings and marked by a blue buoy attached to the easternmost and westernmost mooring buoys. The Restricted Area shall rank as an obstruction for the purpose of RRS 19 and 20.

B7.2 An infringement of SI B7.1 will result in a time penalty of 3% being given by the Race Committee without a hearing in accordance with RRS 60.5(b)3. However, if the Race Committee considers that a significant advantage has been gained, it may protest the boat.

APPENDIX C - COMMUNICATIONS

C1 APP

C1.1 Competitors may receive courses and other information via the App from the Race Committee. The App also can be used to make a declaration of finished, retired or did not compete.

C1.2 Use of the App requires registration by an individual crew member using a Registration ID made available to the entrant prior to the event. There is no limit to the number of devices registered to use the App on each boat (*multiple devices are encouraged*).

C1.3 Failure of this service shall not be grounds for redress.

APPENDIX D - DECLARATIONS

CHANGING RRS APPENDIX A

D1.1 A declaration must be made for each race within 60 minutes of finishing or retiring from the boat's only or final race of the day or when it is known that the boat will not be competing. This time may be extended by the Race Committee at their sole discretion.

Note: For safety reasons, it is particularly important that competitors declare at the earliest opportunity that they will not be competing in a race or that they have retired.

D1.2 If a boat that finishes fails to observe D1.1:

- a. The boat may, within 24 hours of the protest time limit described in D1.1, complete a late declaration form in person at the Regatta Centre stating that the boat sailed the course correctly and complied with all relevant rules. In this case the boat will be given a penalty of 3% of its elapsed time.
- b. If neither a declaration nor late declaration form is completed, the boat will be scored 'No Declaration' (abbreviation NOD) and will receive the same points as if she were DNF. This changes RRS A10.

D1.3 If a boat that retires or does not compete in a race fails to observe D1.1, the boat may be protested by the Race Committee and the Protest Committee will determine what penalty, if any, shall be applied to a subsequent race or overall score.

D1.4 App Declarations

To make a declaration using the App, select "My regatta" from the bottom menu and then "DECLARE" from the top tab. Tap on FINISHED, RETIRED or DID NOT COMPETE, as appropriate. If you are declaring your finish, enter your finish time and the sail numbers of the boat ahead and the boat astern, as prompted. Tap SEND DECLARATION to complete your declaration.

D1.5 If a declaration cannot be made via the App, competitors should contact the Regatta Centre on 01983 295744 without delay. Retirement declarations can also be notified by VHF (see Table 1 : VHF Communications).

APPENDIX E - PENALTIES

E1.1 Time penalties for infringements of Part 2 of the RRS or of RRS 31.

- a. Subject to SI E1.1 f below, the Turns Penalties described in RRS 44.2 are replaced by a time penalty of 1% being added to the boat's elapsed time.
- b. A boat takes a time penalty by displaying a yellow flag at the first reasonable opportunity after the incident and keeping it displayed until after finishing.
- c. Prior to the first hearing, a boat that did not comply with E1.1.b or g, may acknowledge an infringement by accepting a time penalty of 3% being added to her elapsed time.
- d. A boat that accepts a time penalty may protest with respect to the same incident but her penalty will not be reduced.
- e. A boat that takes a time penalty shall not be penalised further in respect of the same incident unless she failed to retire as required by RRS 44.1(b).
- f. For J/70s and SB20s in races on the Saturday to Tuesday of the Regatta and Cape 31s in races on the Sunday to Tuesday of the Regatta, the first two sentences of RRS 44.1 are changed to: "A boat may take a One-Turn Penalty when she may have broken one or more rules of Part 2 or RRS 31 in an incident while racing. Penalties while in the zone of the windward mark or on the offset leg shall be delayed and taken at the first reasonable opportunity on the downwind leg. This change is added to RRS 44.2."
- g. Boats taking a penalty must report the infringement in person at the Protest Office at the Regatta Centre at the first reasonable opportunity.

E1.2 A boat shall not be scored as having finished outside the time limit solely by the application of a time penalty. This changes RRS 44.

E1.3 Z-flag rule (changing RRS 30.2).

The 20% scoring penalty described in RRS 30.2 is replaced with a 3% time penalty.

E1.4 Black-flag rule (changing RRS 30.4)

The requirement in RRS 30.4 for the Race Committee to display a boat's sail number is replaced by the following: Not sooner than one minute after the start signal, the Race Committee will inform competitors of their disqualification on VHF radio (see Table 1 : VHF Communications for the channels to be used on each start line).

E1.5 Race Committee and Protest Committee Imposed Penalties

The level of penalties (other than those penalties specifically defined in these Sailing Instructions) for infringements of rules shall be at the discretion of the Protest Committee and may be disqualification, a time penalty or a warning with no penalty. This changes RRS 60.5.

E1.6 Where these Sailing Instructions allow the Race Committee or Protest Committee to penalise a boat without a hearing, the competitor shall nonetheless be entitled to a hearing upon request.

APPENDIX F – HEARING REQUESTS AND PROTESTS

CHANGING RRS 60 & 63.1

F1.1 Hearing requests and protests shall be lodged:

- a. In writing at the Protest Office at the Regatta Centre using official protest forms that are available from the same location.
- b. From Saturday to Thursday: within two hours after the boat's finishing time in its last or only race of the day, or should the boat not finish, within two hours after entering port.
- c. On Friday: within one hour after the boat's finishing time, or should the boat not finish, within one hour after entering port.

F1.2 Rating protests and protests relating to alleged non-compliance with one-design rules shall be lodged:

- a. Within 24 hours of the reason for the protest becoming known to the protestor and,
- b. Not later than the end of protest time on the Thursday of the Regatta.

F1.3 Impending protests

- a. A list of impending protests will be available at the Protest Desk at the Regatta Centre and may be repeated on the ONB. The failure or omission of either of these alternatives shall not be grounds for redress.
- b. A boat that is the subject of a protest shall ascertain the time of hearing at the Protest Office at the Regatta Centre. The telephone number of the Protest Desk is 01983 248004.
- c. F1.3(a) does not relieve protestors from their obligations under RRS 60.2, nor protestees from responding properly to being informed.

F1.4 Protests arising from races on Friday:

- a. Will be heard as soon as possible that day, unless exceptional circumstances prevail.
- b. Protests being heard on this day that may affect a prize winner may be heard before other protests.

TABLE 1 : VHF COMMUNICATIONS

TIME OF BROADCAST	FOR CLASSES	VHF CHANNEL	INFORMATION
COMMUNICATIONS BY RACE COMMITTEE			
0850 until the end of the starting sequence on the RYS Line	All Classes	22	<ul style="list-style-type: none"> General Information about the day's racing Start lines to be used by each class For classes starting on an RYS Line, course announcements made approximately 20 minutes before the scheduled start time for each class General announcements
from 0930 or one hour before the first start, whichever is the later	Classes starting on Committee Vessel 1 Start Line	02	<ul style="list-style-type: none"> Start lines to be used by each class Courses Start Signals
	Classes starting on RYS Lines	03	
	Classes starting on Committee Vessel 2 Start Line	04	
	Classes starting on Committee Vessel 3 Start Line	72	
	Classes starting on Committee Vessel 4 Start Line	05	
COMMUNICATIONS BY COMPETITORS			
All Day	All Classes	77	<ul style="list-style-type: none"> Communications with the Race Committee Retirements
All Day	All Classes	16	In the event of an emergency competitors should, as normal, use VHF Ch16 to communicate with the emergency services via the Coastguard.

TABLE 2 : CLASS DISCARDS

CLASS	RACES TO COUNT FOR SERIES			NUMBER NOT COMPLETED						
	FROM	TO	TOTAL	0	1	2	3	4	5	6+
Club Cruiser Division C & D, IRC 0-7, J/109, Performance Cruiser Division A & B, Quarter Ton and Sigma 33	Sat	Fri	7 scores*	1	1	0	0	0	0	0
Contessa 32	Sat	Fri	7 scores*	2	1	0	0	0	0	0
Daring, Dragon, Etchells, Flying Fifteen, Redwing, Seaview Mermaid, Solent Sunbeam, Sonar, Sportsboat and Victory	Sat	Fri	7 scores*	1	1	0	0	0	0	0
XOD	Sat	Fri	7 scores*	1	1	1	0	0	0	0
J/70 (short series)	Sat	Tue	12 races	2	2	1	1	1	1	0
J/70 (all week)	Sat	Fri	7 scores*	1	1	0	0	0	0	0
SB20 Grand Slam	Sat	Tue	12 races	2	2	1	1	1	1	0
SB20 Mini Slam	Wed	Fri	3 races	0	0	0	0	0	0	0
Cape 31 (mini series)	Sun	Tue	9 races	1	1	1	1	1	0	0
Cape 31 (all week)	Sat	Fri	7 scores*	1	1	0	0	0	0	0
Swallow	Mon	Fri	9 races	1	1	1	0	0	0	0

*Scores : When one race is completed on a day, a boat's 'score' for that day will be her race score. When more than one race is completed on a day, a boat's 'score' for that day will be the average of her individual race scores (this shall not apply to races rescheduled from a different day, which will continue to be scored individually).

TABLE 3 : CHANGES TO RRS RACE SIGNALS






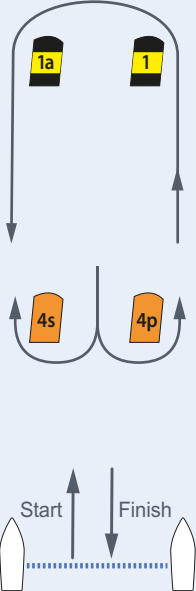
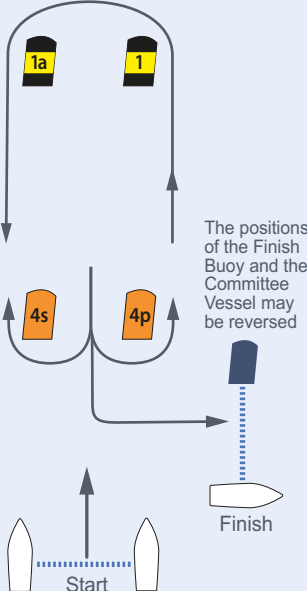
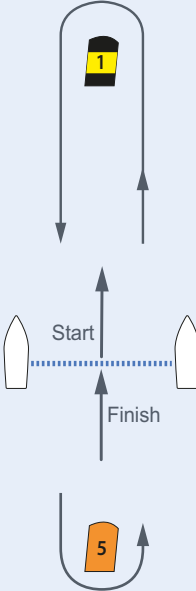
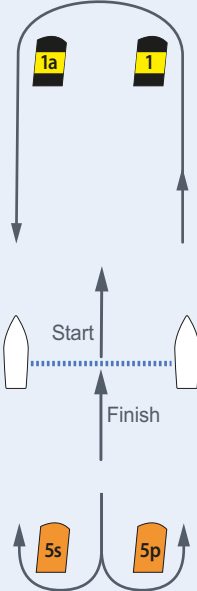
FLAGS	AP over AP 	Green 	Red 	S over 3rd Sub 	K over class flag 
SAILING INSTRUCTION	SI 5.6	SI 12.8	SI 12.8	SI 13.3	SI 16.2

DIAGRAM 1 : DEFINED COURSES FOR COMMITTEE VESSEL STARTS

DEFINED COURSE LA Windward-Leeward with spreader mark and leeward finish			DEFINED COURSE LAR Windward-Leeward with spreader mark and reaching finish			DEFINED COURSE LC Windward-Leeward with windward finish			DEFINED COURSE LAC Windward-Leeward with spreader mark and windward finish		
											
LA 2	LA 3	LA 4	LAR 2	LAR 3	LAR 4	LC 2	LC 3	LC 4	LAC 2	LAC 3	LAC 4
Start	Start	Start	Start	Start	Start	Start	Start	Start	Start	Start	Start
1	1	1	1	1	1	1	1	1	1	1	1
1a	1a	1a	1a	1A	1A	5	5	5	1A	1A	1A
4s / 4p	4s / 4p	4s / 4p	4s / 4p	4s / 4p	4s / 4p	1	1	1	5s / 5p	5s / 5p	5s / 5p
1	1	1	1	1	1	5	5	5	1	1	1
1a	1a	1a	1A	1A	1A	Finish	1	1	1A	1A	1A
Finish	4s / 4p	4s / 4p	4p	4s / 4p	4s / 4p		5	5	5S / 5P	5s / 5p	5s / 5p
	1	1	Finish	1	1		Finish	1	Finish	1	1
	1a	1a		1A	1A			5		1A	1A
	Finish	4s / 4p		4P	4s / 4p			Finish		5s / 5p	5s / 5p
		1		Finish	1					Finish	1
		1a			1A						1A
		Finish			4P						5s / 5p
					Finish						Finish

The mark colours in the diagrams above are illustrative. The marks in use for each race will be described as part of the course announcement.

Defined courses for Committee Vessel Starts will be notified to competitors in the following format: The prefix LA, LAR, LC or LAC, followed by a number identifying the number of rounds to be completed eg **LAR 3**.

The bearing and distance to the Windward Mark may be displayed on the Committee Vessel.

Non-defined courses may be set for Committee Vessel Starts, and will be notified to competitors using the 2 character mark IDs detailed in the Racing Marks table on pages 10-11.

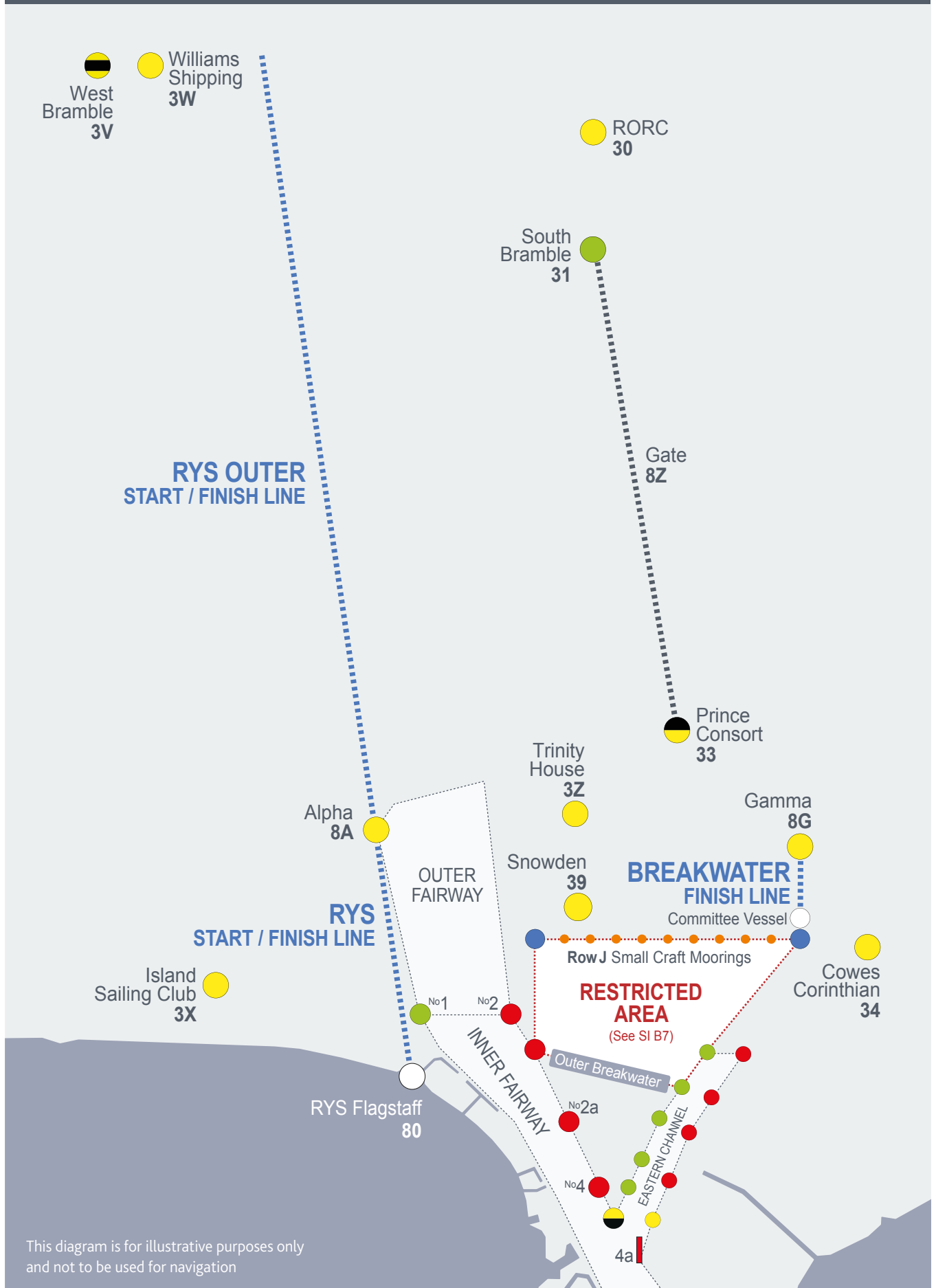
TABLE 4 : RACING MARKS

ID	NAME	COLOUR	LATITUDE (N)	LONGITUDE (W)	ID	NAME	COLOUR	LATITUDE (N)	LONGITUDE (W)
ZONE 1 - WESTERN APPROACHES					22	Charles Stanley		50 42.86	01 29.40
1A	Peveril Ledge		50 36.41	01 56.10	24	Now Students		50 42.86	01 28.42
1B	Poole Bar No 1		50 39.29	01 55.14	25	Jeremy Rogers Contessa		50 43.15	01 27.49
1C	Stoneways Marine		50 40.31	01 54.02	26	Hamstead Ledge		50 43.87	01 26.18
1D	The Rig Shop		50 41 08	01 54 26	27	Adam Harding-Domeney		50 42.97	01 28.16
1E	Ledge Buoy		50 41.50	01 41.60	28	Harwoods		50 42.73	01 28.69
1F	Needles Fairway		50 38.24	01 38.98	ZONE 3 - MID-SOLENT (W)				
1G	South West Shingles		50 39.29	01 37.52	3A	West Lepe		50 45.24	01 24.09
1H	Bridge		50 39.63	01 36.88	3B	Newtown East		50 44.36	01 23.80
1J	Shingles Elbow		50 40.37	01 36.05	3C	Craftinsure		50 45.64	01 23.12
1K	North Head		50 42.69	01 35.52	3D	Salt Mead		50 44.51	01 23.04
1L	Needles Lighthouse		50 39.73	01 35.50	3E	The Boss		50 46.13	01 22.19
1M	Warden		50 41.48	01 33.55	3F	Monex Marine		50 44.72	01 21.95
1N	North East Shingles		50 41.96	01 33.41	3G	Cowes Week 2026		50 46.58	01 21.46
11	East Hook		50 40.58	01 55.23	3H	East Lepe		50 45.93	01 21.07
13	Parkstone YC		50 39.46	01 55.20	3K	Lepe Spit		50 46.78	01 20.64
ZONE 2 - WESTERN SOLENT					3L	Gurnard Ledge		50 45.51	01 20.59
2A	Embley School		50 42.77	01 32.43	3N	MDL Marinas		50 47.07	01 19.88
2B	Dunford Construction		50 43.38	01 31.54	3P	Cowes Yacht Haven		50 45.68	01 19.98
2C	Colten		50 43.83	01 30.86	3Q	Polly's Challenge		50 45.97	01 19.45
2D	Lymington Yacht Haven		50 44 17	01 30.10	3R	North East Gurnard		50 47.06	01 19.42
2E	Circle Marine Insurance		50 44.49	01 29.32	3S	TeamO		50 47.81	01 19.25
2F	Berthon		50 44.20	01 29.22	3T	CHS		50 46.10	01 18.87
2G	Bridgeworks WAN Acceleration		50 44.79	01 28.47	3U	Gurnard		50 46.22	01 18.84
2H	Draycott Chartered Surveyors		50 44.30	01 28.16	3V	West Bramble		50 47.20	01 18.65
2J	Zwerver		50 45.11	01 27.34	3W	Williams Shipping		50 47.20	01 18.55
2K	Greenings Fintech		50 44.83	01 26.09	3X	Island sailing Club		50 46.10	01 18.43
2L	Royal Lymington YC		50 43.14	01 31.95	3Y	West Knoll		50 47.43	01 17.84
2R	Powder Byrne		50 45.43	01 25.89	3Z	Trinity House Buoy		50 46.31	01 17.75
2T	Lymington Bank		50 43.10	01 30.85	30	RORC		50 47.12	01 17.72
2U	Tuakana Construction		50 43.67	01 29.50	31	South Bramble		50 46.98	01 17.72
2X	Solent Bank		50 44.23	01 27.37	33	Prince Consort		50 46.41	01 17.56
20	Sconce		50 42.53	01 31.43	34	Cowes Corinthian		50 46.15	01 17.20
21	Black Rock		50 42.57	01 30.59	39	Snowden		50 46.20	01 17.75

TABLE 4 : RACING MARKS

ID	NAME	COLOUR	LATITUDE (N)	LONGITUDE (W)	ID	NAME	COLOUR	LATITUDE (N)	LONGITUDE (W)
ZONE 4 - MID-SOLENT (E)					5D	Kemps Quay		50 45.18	01 09.65
4B	Coronation		50 49.55	01 17.62	5E	Warsash Sailing Club		50 46.26	01 08.76
4C	Fumesy		50 49.21	01 17.46	5F	North Sturbridge		50 45.33	01 08.23
4E	Jane		50 47.67	01 17.00	5G	Baker Trayte Marine		50 46.42	01 07.90
4F	Royal Thames		50 47.20	01 17.00	5J	KB Dry Stack		50 46.61	01 07.29
4G	Chieftain Training		50 49.45	01 16.91	5M	Gleeds		50 46.11	01 06.52
4H	East Knoll		50 47.96	01 16.83	5N	Mary Rose		50 45.80	01 06.20
4J	hamblewinterseries.com		50 48.63	01 16.56	5Q	Outer Spit		50 45.44	01 05.46
4K	Royal London YC		50 46.15	01 16.65	5O	Fairhall West		50 46.81	01 10.40
4L	William		50 49.03	01 16.49	5I	SBSC Central		50 46.60	01 09.85
4M	Hill Head		50 48.07	01 16.00	ZONE 6 - EASTERN APPROACHES				
4N	Ben F Wood		50 47.27	01 15.90	6A	No Man's Land Fort		50 44.40	01 05.70
4P	West Ryde Middle		50 46.48	01 15.79	6B	Horse Sand Fort		50 45.01	01 04.34
4Q	John Fisher		50 48.46	01 15.72	6C	Warner		50 43.87	01 03.99
4R	Darling Buoy		50 49.18	01 15.71	6D	Horse Elbow		50 44.26	01 03.88
4S	Royal Southern		50 48.86	01 15.43	6E	West Princessa		50 40.16	01 03.65
4T	Norris		50 45.97	01 15.51	6F	Bembridge Ledge Buoy		50 41.15	01 02.81
4U	Goodall Roofing		50 46.43	01 15.09	6G	St Helens Buoy		50 43.36	01 02.41
4V	Hamble Yacht Services		50 48.13	01 14.64	6H	Dean Elbow		50 43.69	01 01.88
4W	Ancasta		50 47.33	01 14.59	6J	Nab East		50 42.86	01 00.80
4X	Colette		50 45.53	01 14.39	6K	Horse Tail		50 43.23	01 00.23
4Y	North Ryde Middle		50 46.61	01 14.31	6L	Winner		50 45.10	01 00.10
4Z	South Ryde Middle		50 46.13	01 14.16	6M	Nab End		50 42.63	00 59.49
4O	Haven Knox Johnston Specialist		50 47.66	01 13.65	6N	Dean Tail		50 42.99	00 59.17
41	East Bramble		50 47.23	01 13.64	6P	New Grounds		50 41.84	00 58.49
42	Peel Bank		50 45.49	01 13.35	6R	Nab Tower		50 40.08	00 57.15
43	Little Ship Club		50 46.16	01 13.09	6S	Outer Nab No 2		50 38.43	00 57.70
44	Royal Yacht Squadron		50 47.31	01 12.10	ZONE 8 - CW SPECIFIC MARKS				
45	South East Ryde Middle		50 45.93	01 12.10	8O	RYS Flagstaff		50 46.004	01 18.055
46	North East Ryde Middle		50 46.21	01 11.88	81	RYS Line		off RYS Castle	
47	Contessa 32 Class		50 47.70	01 15.25	88	Breakwater Finish Line		n/a	
48	Paul Heys		50 48.21	01 16.68	89	RYS Outer Start / Finish Line		n/a	
49	250th Anniversary		50 46.40	01 13.58	8A	Alpha		50 46.29	01 18.13
ZONE 5 - EASTERN SOLENT					8G	Gamma		50 46.27	01 17.33
5A	Quarr		50 45.03	01 11.89	8H	Laid mark 8H		50 45.19	01 20.65
5B	Motherbank		50 45.49	01 11.21	8W	Laid Windward Mark		n/a	
5C	Browndown		50 46.57	01 10.95	8Z	Gate: South Bramble (31) to Prince Consort (33)		n/a	

DIAGRAM 2 : START & FINISH LINES, FAIRWAYS AND RESTRICTED AREA



COWES WEEK LIMITED

Regatta House, 18 Bath Road, Cowes,
Isle of Wight, PO31 7QN

Entry Enquiries : +44 1983 248 001

General Enquiries : +44 1983 295 744

Email : entries@cowesweek.co.uk

Website : www.cowesweek.co.uk