


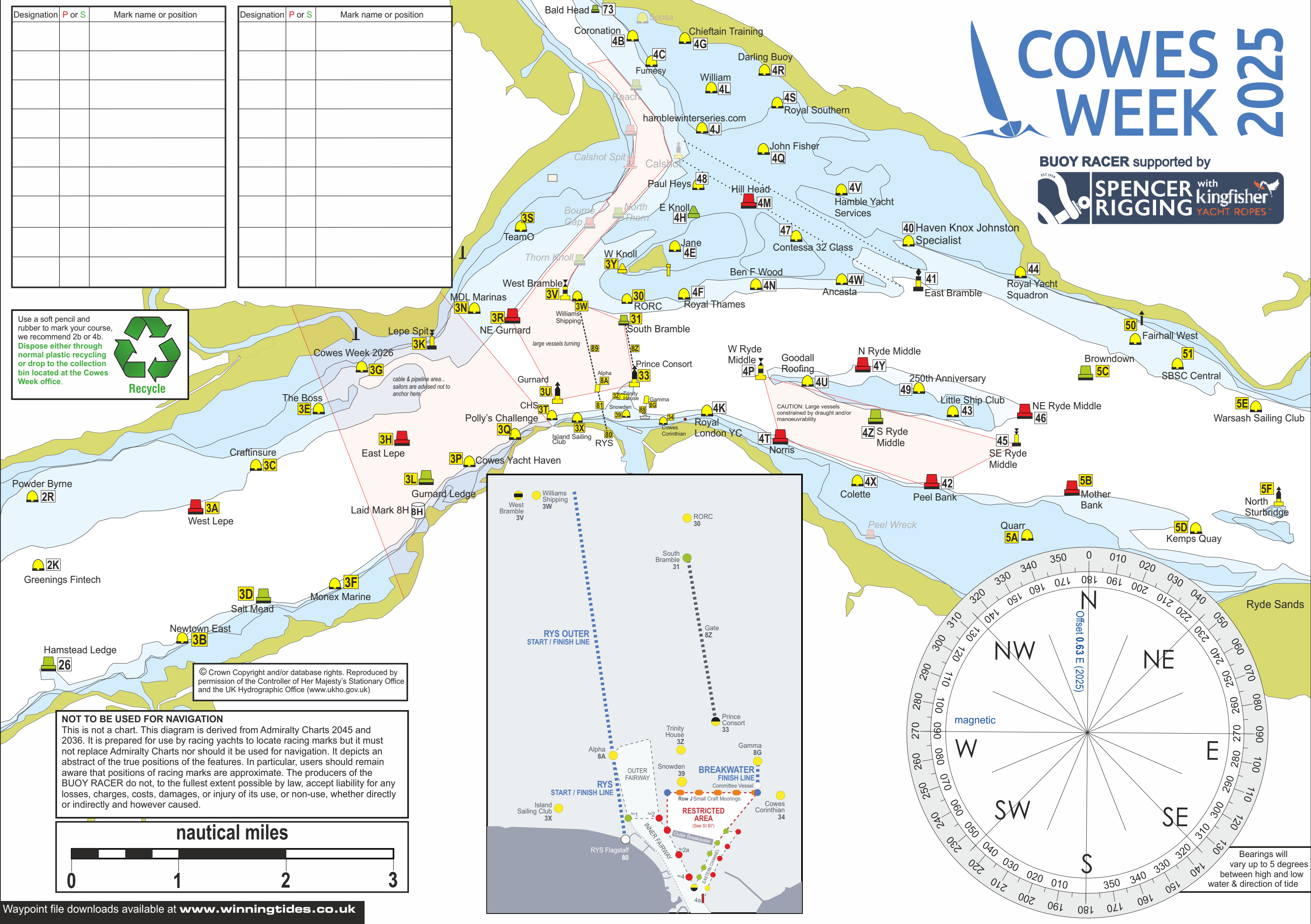
Designation	P or S	Mark name or position

Designation	P or S	Mark name or position

Use a soft pencil and rubber to mark your course, we recommend 2b or 4b. **Dispose either through normal plastic recycling or drop to the collection bin located at the Cowes Week office.**

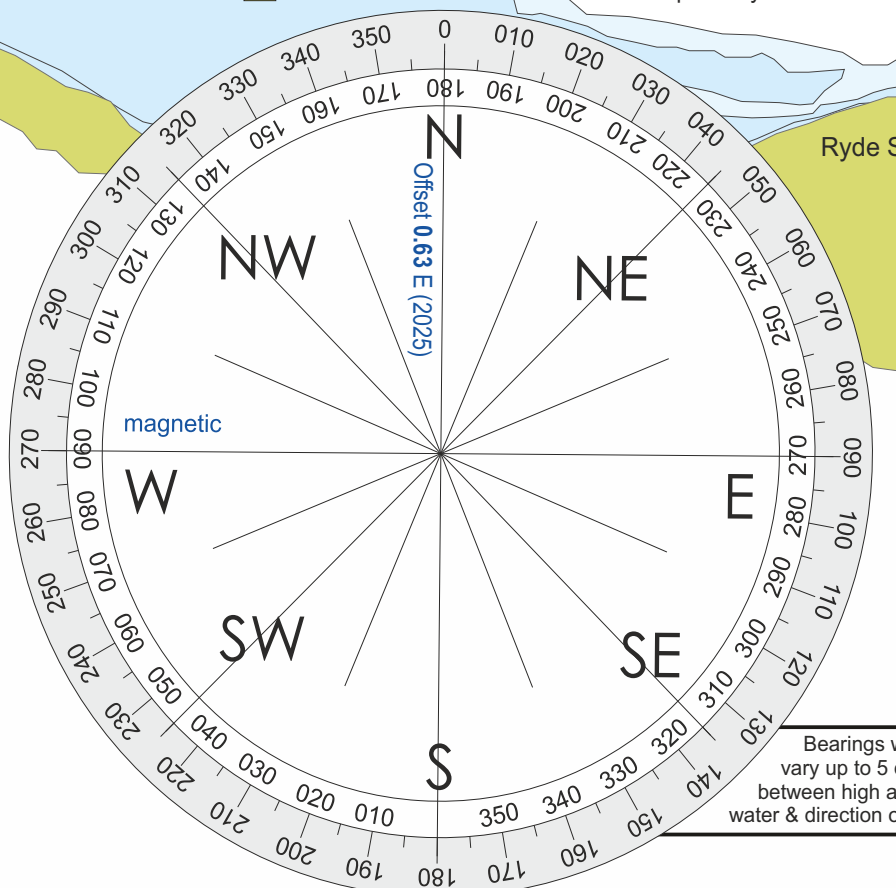
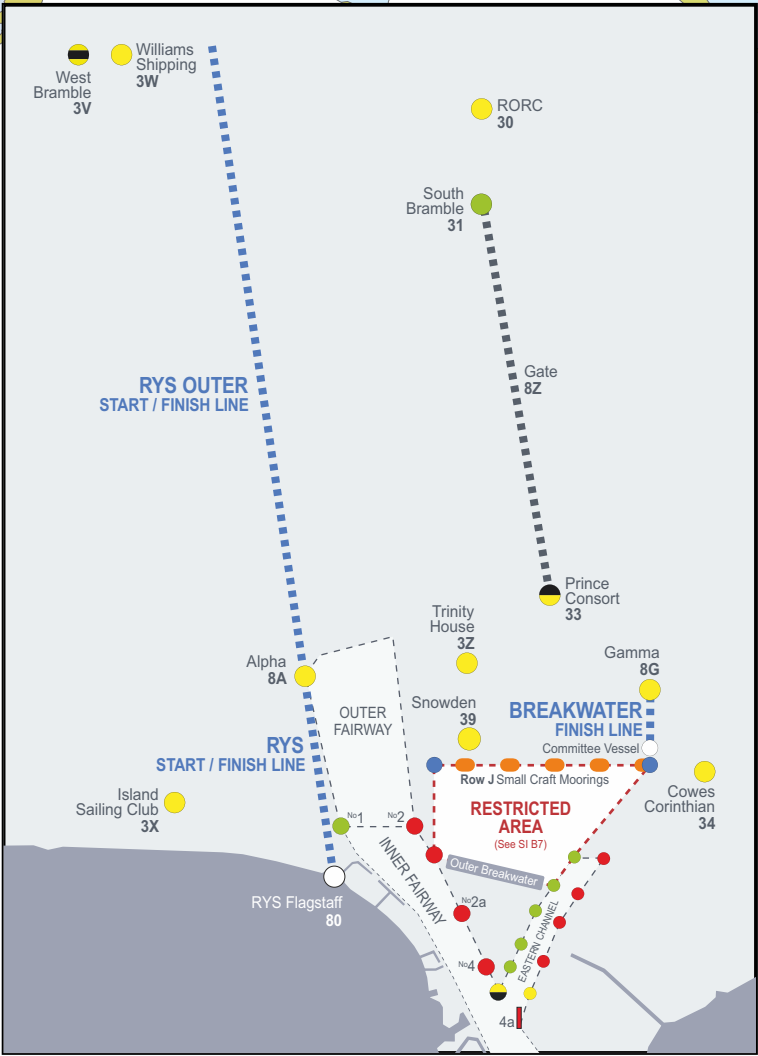


Recycle



© Crown Copyright and/or database rights. Reproduced by permission of the Controller of Her Majesty's Stationary Office and the UK Hydrographic Office (www.ukho.gov.uk)

NOT TO BE USED FOR NAVIGATION
 This is not a chart. This diagram is derived from Admiralty Charts 2045 and 2036. It is prepared for use by racing yachts to locate racing marks but it must not replace Admiralty Charts nor should it be used for navigation. It depicts an abstract of the true positions of the features. In particular, users should remain aware that positions of racing marks are approximate. The producers of the BUOY RACER do not, to the fullest extent possible by law, accept liability for any losses, charges, costs, damages, or injury of its use, or non-use, whether directly or indirectly and however caused.



Bearings will vary up to 5 degrees between high and low water & direction of tide